

# POCKETFERRYBOX

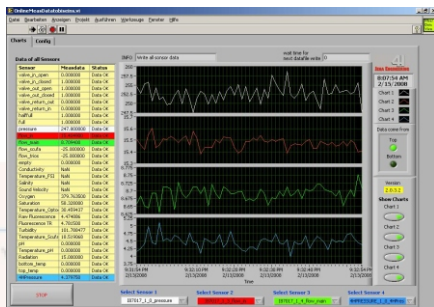
# 4

## JENA ENGINEERING



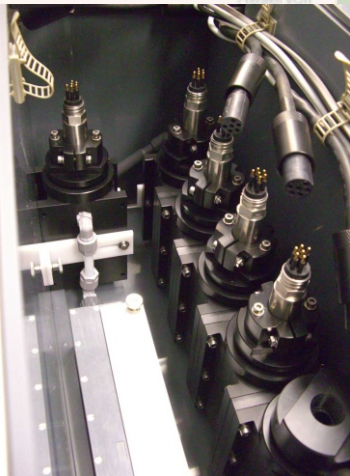
### Application

The **-4H-PocketFerryBox** provides solutions to the problems associated with *in situ* monitoring of rivers, estuaries and coastal zones. The portable flow-through system combines the flexibility in the choice of sensor types and methods and the possibility for automatic and remote-controlled operation based on LabVIEW software technology. The compact design in a portable case opens new perspectives of monitoring-tasks, all from stationary river monitoring to position controlled FerryBoxes is possible.



Tap Water

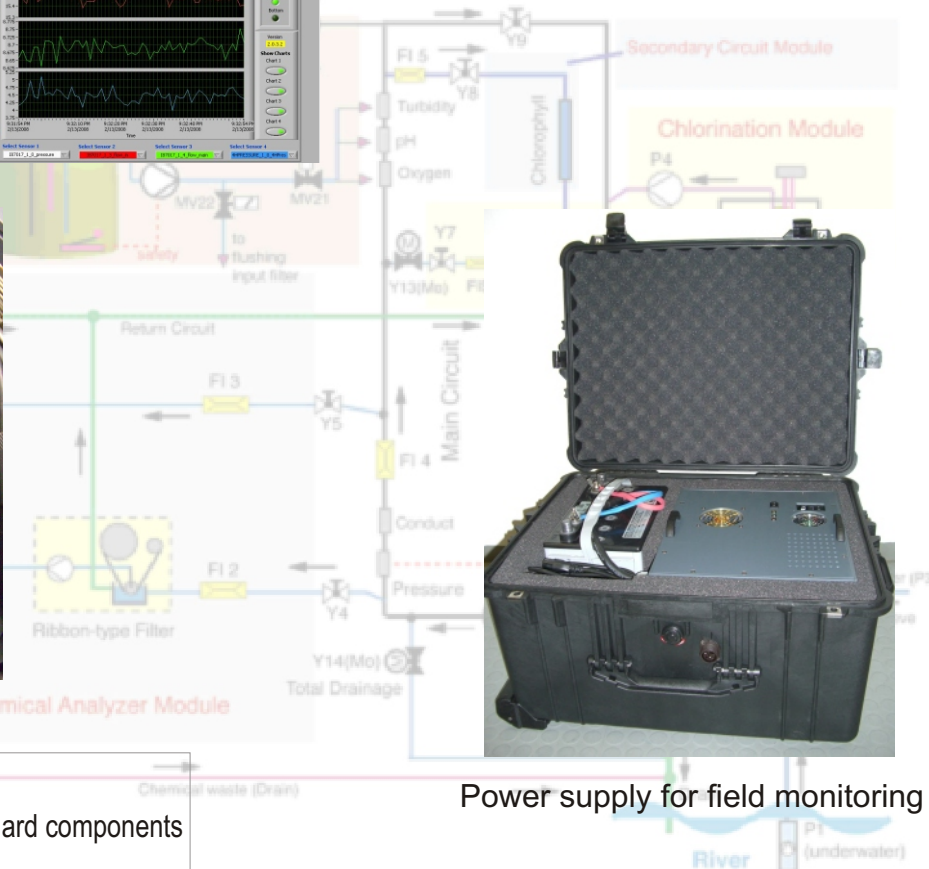
Cleaning Module



Nutrient-Analyzer (NO<sub>3</sub>+NH<sub>4</sub>+PO<sub>4</sub>)

Chemical Analyzer Module

- cost-effective because of the use of standard components
- requires little space because of the compact form
- easy to maintain because of the open design
- flexible because of portable design and autonomous power supply



Power supply for field monitoring

**-4H- JENA engineering GmbH**

Mühlenstraße 126 • D-07745 Jena, Germany

Tel. +49(0)3641/28 87-0 • Fax +49(0)3641/28 87 26

e-mail: info@4h-jena.de • <http://www.4h-jena.de>