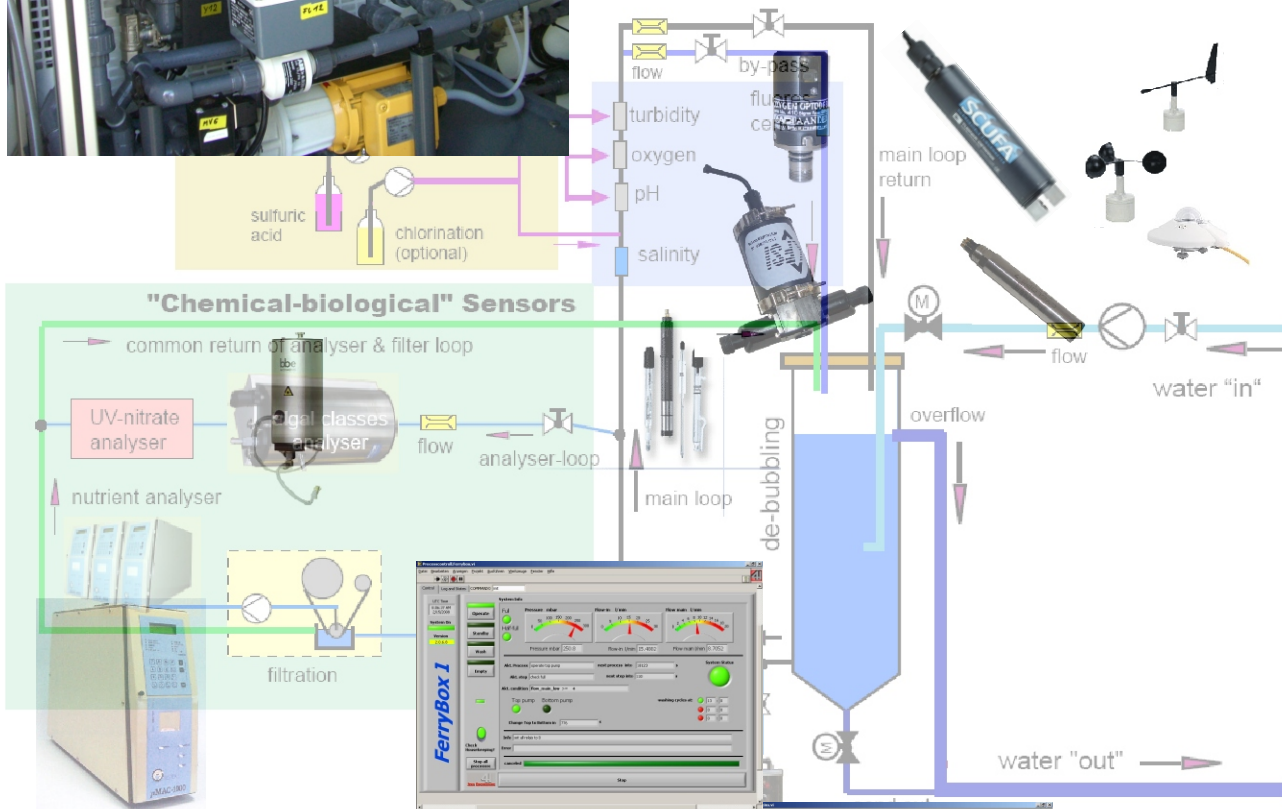


Application

The **-4H-FerryBox** provides solutions to the problems associated with long-term *in situ* monitoring of rivers, estuaries, coastal zones and open sea. The modular flow-through system combines high flexibility in the choice of sensor types and methods with a fully integrated anti-fouling concept and the possibility for automatic and remote-controlled operation based on the "LabVIEW" software technology. A wide range of monitoring-tasks, all from stationary river monitoring to position controlled FerryBoxes is possible.



- cost-effective
because of the use of standard components
- requires little space
because of the compact form
- easy to maintain
because of the open design and the anti-fouling concept
- flexible
because of the by-passes and the use of standard components

Process control of the water system based on LabVIEW 8.2 software