



Your New Choice!



Subsea Connector

Datasheet

Table of Contents

Circular Connector	1
Mini 1 Contact	1
Bulkhead Connector (SCBH)	2
Attachable Connector (SCAT)	5
Inline Connector (SCIL)	6
Overmold Connector (SCOM).....	9
Dummy (SCDC).....	12
Mini Bulkhead Connector (MCBH)	13
Mini Bulkhead Right Angle Connector (MCBHRA)	15
Mini Inline Connector (MCIL)	16
Mini Overmold Connector (MCOM).....	18
MC Dummy (MCDC).....	20
Low Profile Connector	21
Bulkhead Connector (LPBH)	21
Inline Connector (LPIL)	26
Mini Bulkhead Connector (LPMCBH).....	31
Mini Inline Connector (LPMCIL).....	32
Mini Overmold Connector (LPMCOM)	33
Metal Shell 1500	34
Mini Hex Connector (MCHX)	34
Mini Flange Connector (MCFG).....	35
Metal Shell 2000	36
Flange Connector.....	36
Power Connector	37
Power Battery Bulkhead Connector (PBBH)	37
Power Battery Inline Connector (PBIL)	38
High Power Bulkhead Connector (HPBH).....	39
High Power Inline Connector (HPIL).....	40

Table of Contents

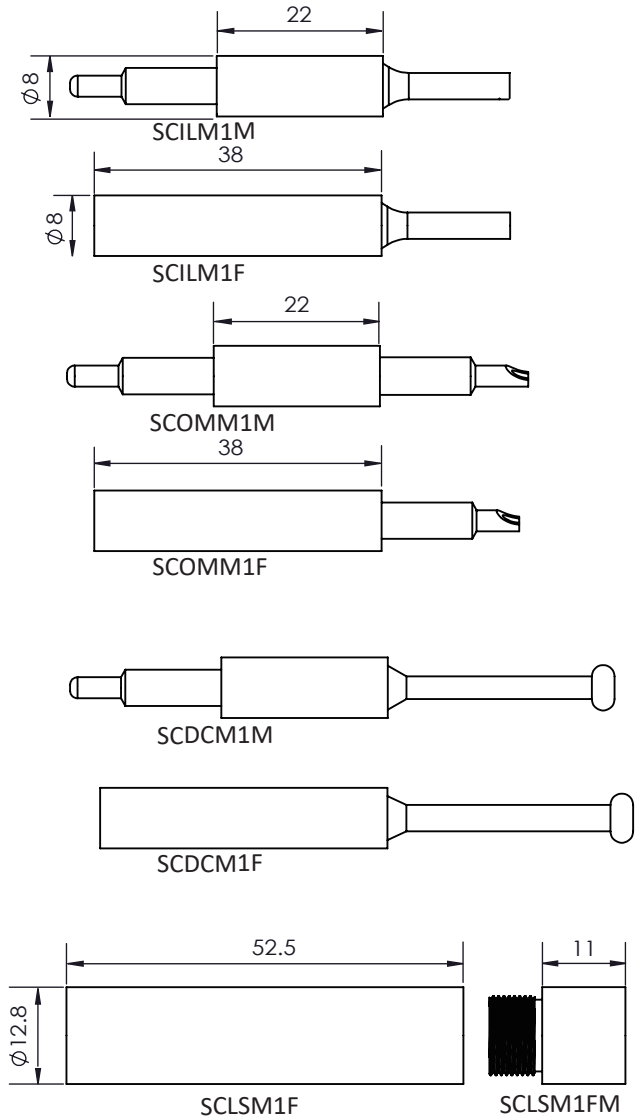
Dummy for Power Battery Connector (PBDC)	41
Dummy for High Power Connector (HPDC)	41
Ethernet Connector	42
Mini Bulkhead Connector (MCBH8E)	42
Mini Inline Connector (MCIL8E)	43
Power Ethernet Connector	44
Mini Bulkhead Connector (MCBH13E)	44
Mini Inline Connector (MCIL13E)	45
Low Profile Ethernet Connector	46
Bulkhead Connector (LPBH13E)	46
Inline Connector (LPIL13E)	47
Ethernet Metal Shell 2013	48
Flange Connector	48
Penetrator Connector	49
A type (PNTRA)	49
B type (PNTRB)	50
C type (PNTRC)	51
D type (PNTRD)	52
Diving Connector	53
2 Pole Inline Connector (EO)	53
Rubber Molded Connector	54
G size Inline Cable (RG)	54
K size Inline Cable (RK)	55
Accessories	56
Locking Sleeve	56
Nuts and Washers	57

Table of Contents

Metal Shell G	58
Metal Shell G Bulkhead Connector (MSG-BCR).....	58
Metal Shell G Flange Connector (MSG-FCR)	59
Metal Shell G Coupling Connector (MSG-CCP).....	60
Metal Shell G Coupling Right Angel (MSG-CCP-RA).....	61
Metal Shell L	62
Metal Shell L Bulkhead Connector (MSL-BCR)	62
Metal Shell L Flange Connector (MSL-FCR).....	63
Metal Shell L Coupling Connector (MSL-CCP).....	64
Metal Shell S	65
Metal Shell S Single Fiber Optic Connector (MSS-OP-BCR).....	65
Metal Shell S Single Fiber Optic Connector (MSS-OP-CCP)	66
General Information	67

Circular Connector

Contact: 1



*Dimensions in mm
Thread in inches

Operation Specification

Max. voltage	600 VDC
Current rating	10A
Insulation resistance	>200 Mohm
Contact resistance	<0.01 ohm
Wet mating	>500
Depth rating	600 bar
Temperature rating	-40 to 60°C

Material Specification

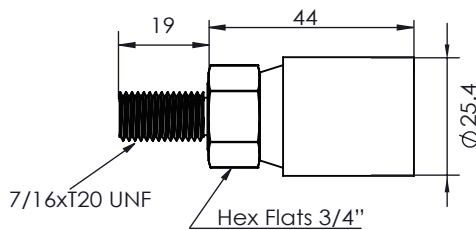
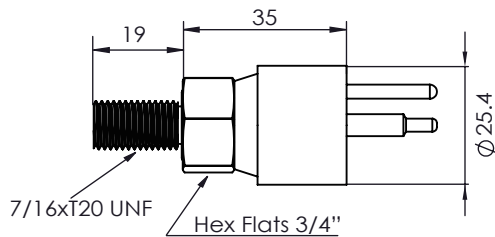
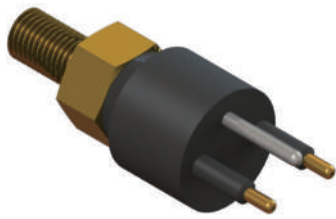
Connector body	Chloroprene rubber
Contact	Gold plated brass
Socket	Beryllium copper
Locking sleeve	POM
Inline cable	AWG 18 Neoprene, 60cm

* compatible with Subconn

Circular Connector

Bulkhead Connector (SCBH)

Contact: 2, 3, 4, 5



*Dimensions in mm
Thread in inches

Operation Specification

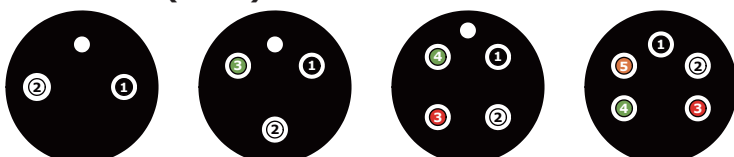
Max. voltage	600 VDC
Current rating @contact	10A
Max. current @connector	30A
Insulation resistance	>200 Mohm
Contact resistance	<0.01 ohm
Wet mating	>500
Depth rating	600 bar (300 bar for peek)
Temperature rating	-40 to 60°C

Material Specification

Connector body	Chloroprene rubber
Bulkhead body	Brass, stainless steel 316, anodized aluminum, titanium or peek
Contact	Gold plated brass
Socket	Beryllium copper
Location pin	Stainless steel 316
Bulkhead leads	AWG 18 PTFE, 30cm
O-rings	NBR 2-014

* compatible with Subconn

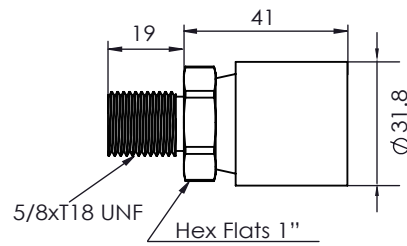
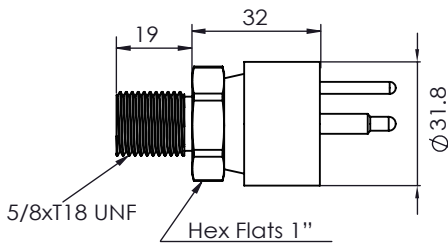
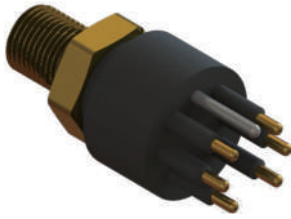
Face View (Male)



Circular Connector

Bulkhead Connector (SCBH)

Contact: 6, 8, 10



*Dimensions in mm
Thread in inches

Operation Specification

Max. voltage	600 VDC
Current rating @contact	10A
Max. current @connector	50A
Insulation resistance	>200 Mohm
Contact resistance	<0.01 ohm
Wet mating	>500
Depth rating	600 bar (300 bar for peek)
Temperature rating	-40 to 60°C

Material Specification

Connector body	Chloroprene Rubber
Bulkhead body	Brass, stainless steel 316, anodized aluminum, titanium or peek
Contact	Phosphor Bronze
Socket	Beryllium Copper
Location pin	Stainless Steel 316
Bulkhead leads	AWG 18 PTFE, 30cm
O-rings	NBR 2-017

* compatible with Subconn

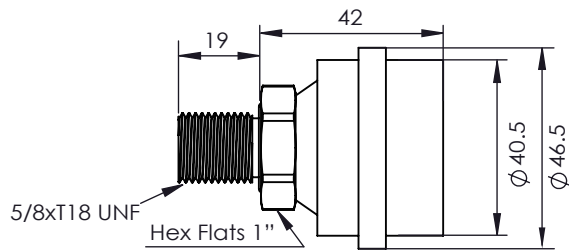
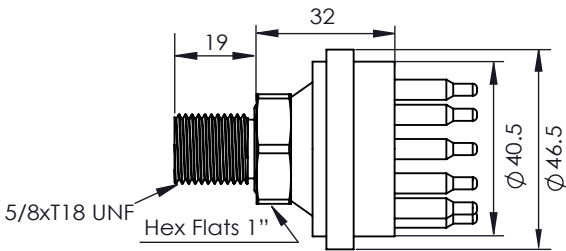
Face View (Male)



Circular Connector

Bulkhead Connector (SCBH)

Contact: 12, 16



*Dimensions in mm
Thread in inches

Operation Specification

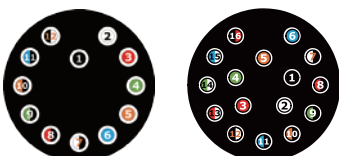
Max. voltage	600 VDC
Current rating @contact	10A
Max. current @connector	60A
Insulation resistance	>200 Mohm
Contact resistance	<0.01 ohm
Wet mating	>500
Depth rating	600 bar (300 bar for peek)
Temperature rating	-40 to 60°C

Material Specification

Connector body	Chloroprene Rubber
Bulkhead body	Brass, stainless steel 316, anodized aluminum, titanium or peek
Contact	Phosphor Bronze
Socket	Beryllium Copper
Location pin	NA
Bulkhead leads	AWG 18 PTFE, 30cm
O-rings	NBR 2-017

* compatible with Subconn

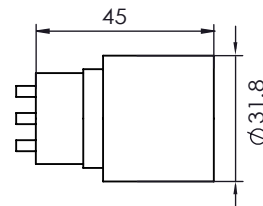
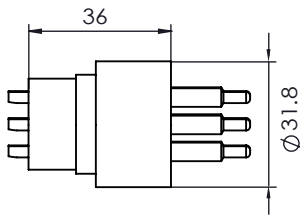
Face View (Male)



Circular Connector

Attachable Connector (SCAT)

Contact: 6, 8



*Dimensions in mm
Thread in inches

Operation Specification

Max. voltage	600 VDC
Current rating @contact	10A
Max. current @connector	50A
Insulation resistance	>200 Mohm
Contact resistance	<0.01 ohm
Wet mating	>500
Depth rating	600 bar
Temperature rating	-40 to 60°C

Material Specification

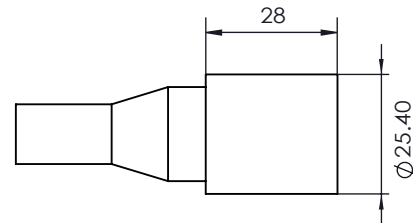
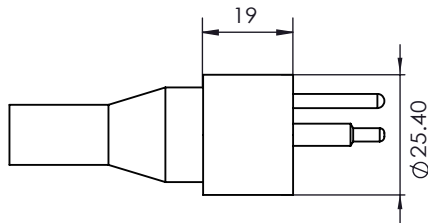
Connector body	Chloroprene rubber
Bulkhead body	NA
Contact	Gold plated brass
Socket	Beryllium copper
Location pin	Stainless steel 316
Bulkhead leads	NA
O-rings	NA

* compatible with Subconn

Circular Connector

Inline Connector (SCIL)

Contact: 2, 3, 4, 5



*Dimensions in mm
Thread in inches

Operation Specification

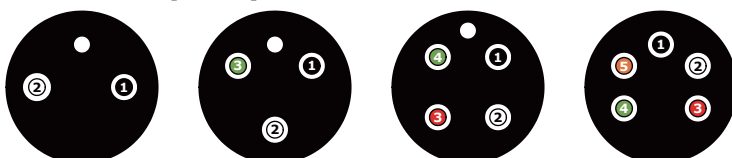
Max. voltage	600 VDC
Current rating @contact	10A
Max. current @connector	30A
Insulation resistance	>200 Mohm
Contact resistance	<0.01 ohm
Wet mating	>500
Depth rating	600 bar
Temperature rating	-40 to 60°C

Material Specification

Connector body	Chloroprene rubber
Contact	Gold plated brass
Socket	Beryllium copper
Location pin	Stainless steel 316
Inline cable	2,3,4 contacts AWG 16 Neoprene, 60cm 5 contacts AWG 18 Neoprene, 60cm
O-rings	NA

* compatible with Subconn

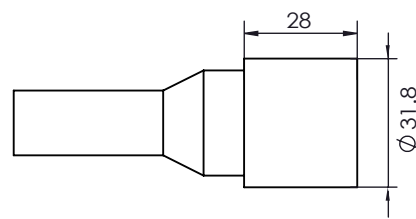
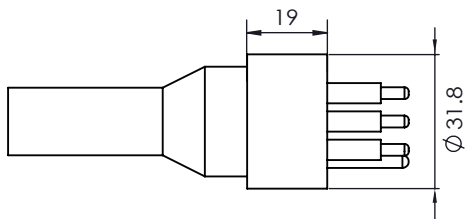
Face View (Male)



Circular Connector

Inline Connector (SCIL)

Contact: 6, 8, 10



*Dimensions in mm
Thread in inches

Operation Specification

Max. voltage	600 VDC
Current rating @contact	10A
Max. current @connector	50A
Insulation resistance	>200 Mohm
Contact resistance	<0.01 ohm
Wet mating	>500
Depth rating	600 bar
Temperature rating	-40 to 60°C

Material Specification

Connector body	Chloroprene rubber
Contact	Gold plated brass
Socket	Beryllium copper
Location pin	Stainless steel 316
Inline cable	6,8 contacts AWG 16 Neoprene, 60cm 10 contacts AWG 18 Neoprene, 60cm
O-rings	NA

* compatible with Subconn

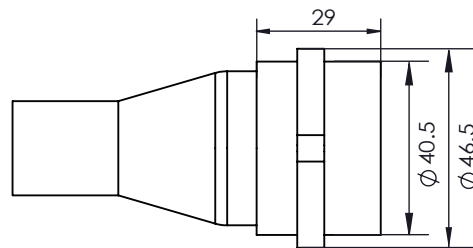
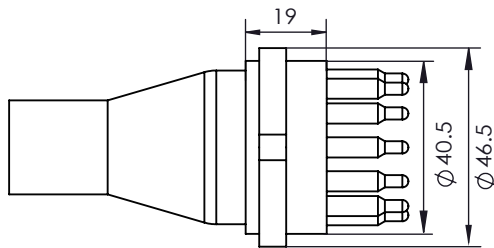
Face View (Male)



Circular Connector

Inline Connector (SCIL)

Contact: 12, 16



*Dimensions in mm
Thread in inches

Operation Specification

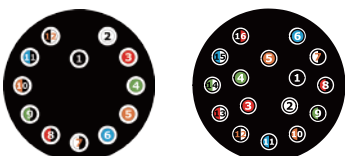
Max. voltage	600 VDC
Current rating @contact	10A
Max. current @connector	60A
Insulation resistance	>200 Mohm
Contact resistance	<0.01 ohm
Wet mating	>500
Depth rating	600 bar
Temperature rating	-40 to 60°C

Material Specification

Connector body	Chloroprene rubber
Contact	Gold plated brass
Socket	Beryllium copper
Location pin	NA
Inline cable	AWG 18 Neoprene, 60cm
O-rings	NA

* compatible with Subconn

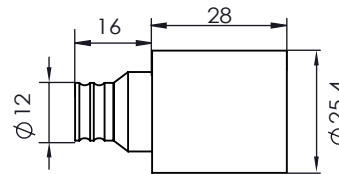
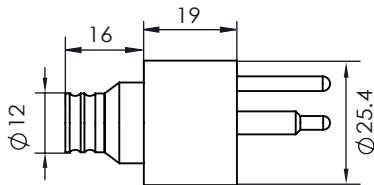
Face View (Male)



Circular Connector

Overmold Connector (SCOM)

Contact: 2, 3, 4, 5



*Dimensions in mm
Thread in inches

Operation Specification

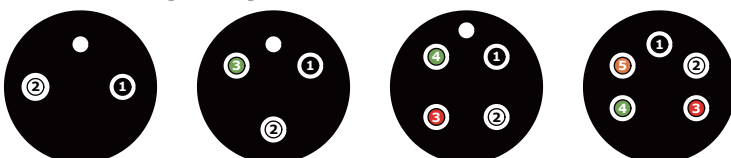
Max. voltage	600 VDC
Current rating @contact	10A
Max. current @connector	30A
Insulation resistance	>200 Mohm
Contact resistance	<0.01 ohm
Wet mating	>500
Depth rating	600 bar
Temperature rating	-40 to 60°C

Material Specification

Connector body	Chloroprene rubber
Bulkhead body	Brass
Contact	Gold plated brass
Socket	Beryllium copper
Location pin	Stainless steel 316
Bulkhead leads	AWG 18 PTFE, 10cm
O-rings	NA

* compatible with Subconn

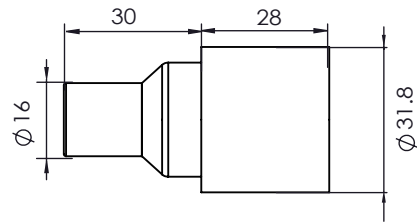
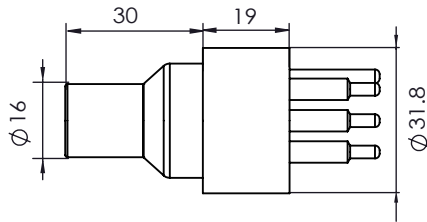
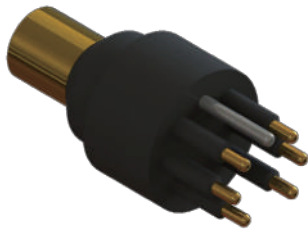
Face View (Male)



Circular Connector

Overmold Connector (SCOM)

Contact: 6, 8, 10



*Dimensions in mm
Thread in inches

Operation Specification

Max. voltage	600 VDC
Current rating @contact	10A
Max. current @connector	50A
Insulation resistance	>200 Mohm
Contact resistance	<0.01 ohm
Wet mating	>500
Depth rating	600 bar
Temperature rating	-40 to 60°C

Material Specification

Connector body	Chloroprene rubber
Bulkhead body	Brass
Contact	Gold plated brass
Socket	Beryllium copper
Location pin	Stainless steel 316
Bulkhead leads	AWG 18 PTFE, 10cm
O-rings	NA

* compatible with Subconn

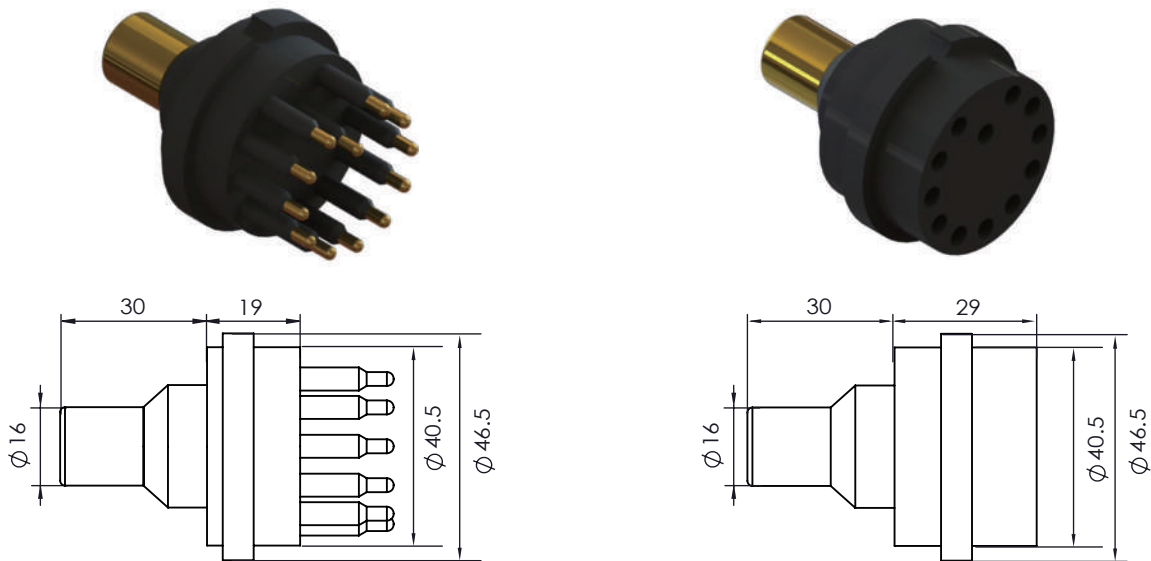
Face View (Male)



Circular Connector

Overmold Connector (SCOM)

Contact: 12, 16



*Dimensions in mm
Thread in inches

Operation Specification

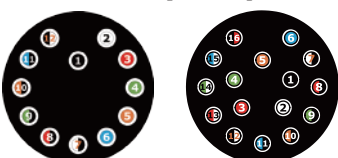
Max. voltage	600 VDC
Current rating @contact	10A
Max. current @connector	60A
Insulation resistance	>200 Mohm
Contact resistance	<0.01 ohm
Wet mating	>500
Depth rating	600 bar
Temperature rating	-40 to 60°C

Material Specification

Connector body	Chloroprene rubber
Bulkhead body	Brass
Contact	Gold plated brass
Socket	Beryllium copper
Location pin	Stainless steel 316
Bulkhead leads	AWG 18 PTFE, 10cm
O-rings	NA

* compatible with Subconn

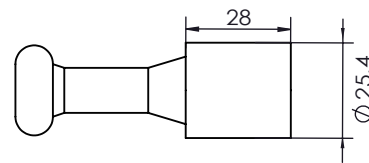
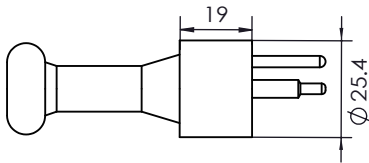
Face View (Male)



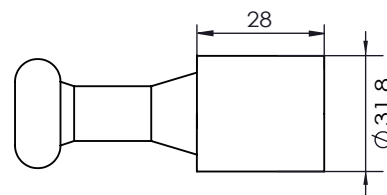
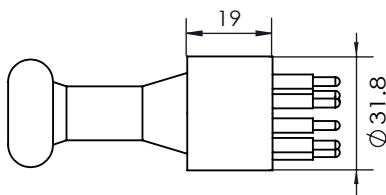
Circular Connector

Dummy (SCDC)

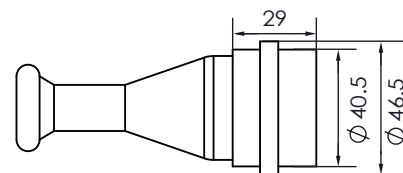
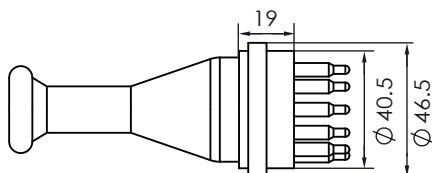
Contact: 2, 3, 4, 5



Contact: 6, 8, 10



Contact: 12, 16



*Dimensions in mm
Thread in inches

Material Specification

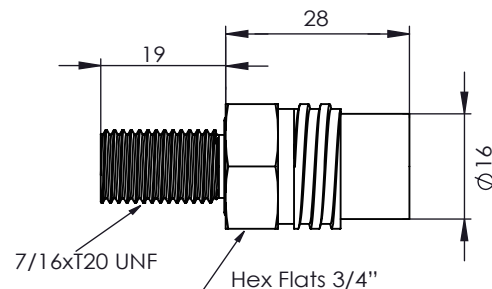
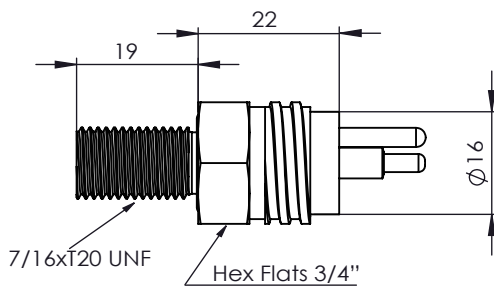
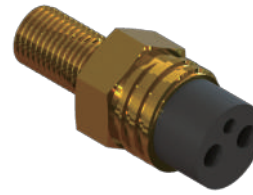
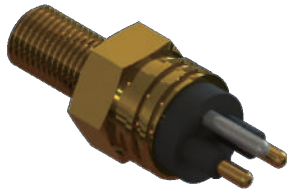
Connector body	Chloroprene rubber
Contact	Gold plated brass
Socket	NA
Location pin	Stainless steel 316

* compatible with Subconn

Circular Connector

Mini Bulkhead Connector (MCBH)

Contact: 2, 3, 4, 5, 6, 8



*Dimensions in mm
Thread in inches

Operation Specification

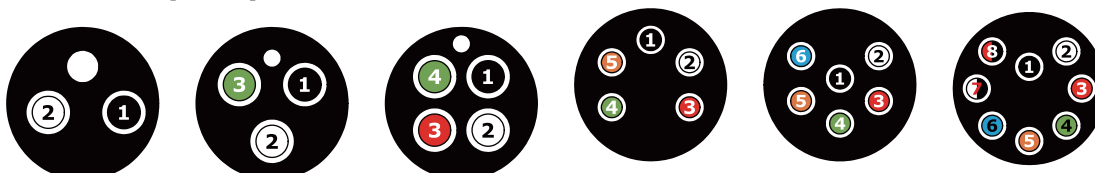
Max. voltage	300 VDC
Current rating @contact	2,3,4 contacts 10A 5,6, 8 contacts 5A
Max. current @connector	20A
Insulation resistance	>200 Mohm
Contact resistance	<0.01 ohm
Wet mating	>500
Depth rating	600 bar (300 bar for peek)
Temperature rating	-40 to 60°C

Material Specification

Connector body	Chloroprene rubber
Bulkhead body	Brass, stainless steel 316, anodized aluminum, titanium or peek
Contact	Gold plated brass
Socket	Beryllium copper
Location pin	Stainless steel 316
Bulkhead leads	2,3,4 contacts AWG 18 PTFE, 30cm (AWG 20 PTFE optional) 5,6,8 contacts AWG 20 PTFE, 30cm (AWG 22 PTFE optional)
O-rings	NBR 2-014

* compatible with Subconn

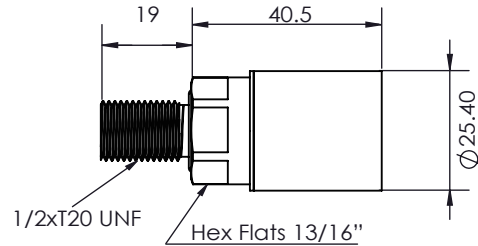
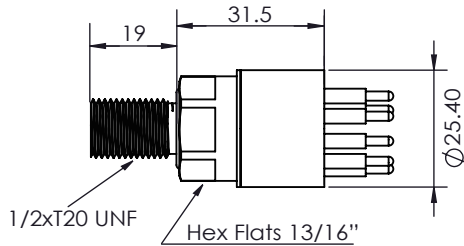
Face View (Male)



Circular Connector

Mini Bulkhead Connector (MCBH)

Contact: 10, 12, 16



*Dimensions in mm
Thread in inches

Operation Specification

Max. voltage	300 VDC
Current rating @contact	5A
Max. current @connector	20A
Insulation resistance	>200 Mohm
Contact resistance	<0.01 ohm
Wet mating	>500
Depth rating	600 bar (300 bar for peek)
Temperature rating	-40 to 60°C

Material Specification

Connector body	Chloroprene rubber
Bulkhead body	Brass, stainless steel 316, anodized aluminum, titanium or peek
Contact	Gold plated brass
Socket	Beryllium copper
Location pin	NA
Bulkhead leads	AWG 20 PTFE, 30cm

* compatible with Subconn

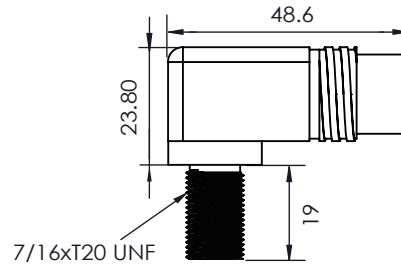
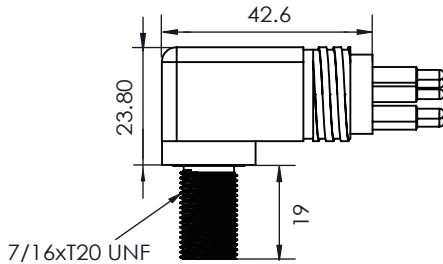
Face View (Male)



Circular Connector

Mini Bulkhead Right Angle Connector (MCBHRA)

Contact: 2, 3, 4, 5, 6, 8



*Dimensions in mm
Thread in inches

Operation Specification

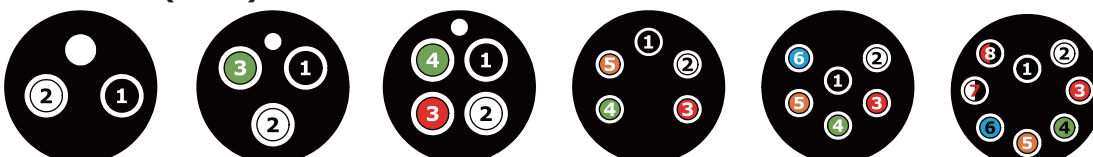
Max. voltage	300 VDC
Current rating @contact	2,3,4 contacts 10A 5,6,8 contacts 5A
Max. current @connector	20A
Insulation resistance	>200 Mohm
Contact resistance	<0.01 ohm
Wet mating	>500
Depth rating	600 bar
Temperature rating	-40 to 60°C

Material Specification

Connector body	Chloroprene rubber
Bulkhead body	Brass, stainless steel 316, anodized aluminum, titanium
Contact	Gold plated brass
Socket	Beryllium copper
Location pin	Stainless steel 316
Bulkhead leads	2,3,4 contacts AWG 18 PTFE, 30cm (AWG 20 PTFE optional) 5,6,8 contacts AWG 20 PTFE, 30cm (AWG 22 PTFE optional)
O-rings	NBR 2-014

* compatible with Subconn

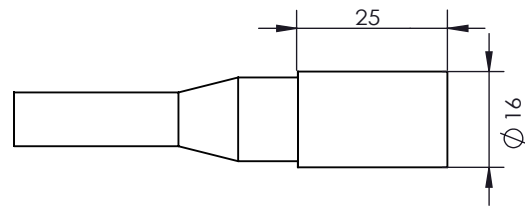
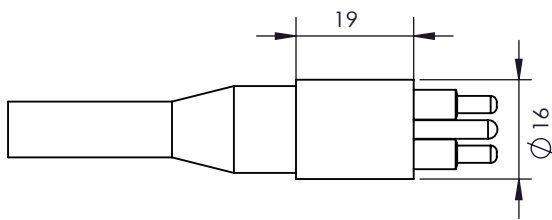
Face View (Male)



Circular Connector

Mini Inline Connector (MCIL)

Contact: 2, 3, 4, 5, 6, 8



*Dimensions in mm
Thread in inches

Operation Specification

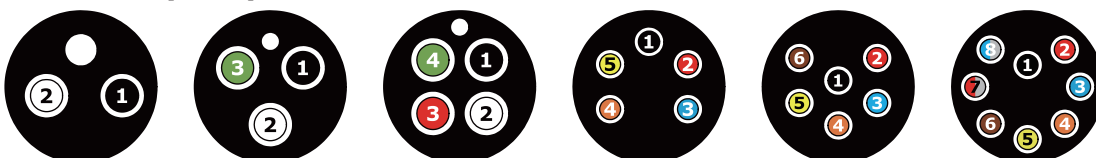
Max. voltage	300 VDC
Current rating @contact	5A
Max. current @connector	20A
Insulation resistance	>200 Mohm
Contact resistance	<0.01 ohm
Wet mating	>500
Depth rating	600 bar
Temperature rating	-40 to 60°C

Material Specification

Connector body	Chloroprene rubber
Contact	Gold plated brass
Socket	Beryllium copper
Location pin	Stainless steel 316
Inline cable	AWG 18 Neoprene, 60cm
O-rings	NA

* compatible with Subconn

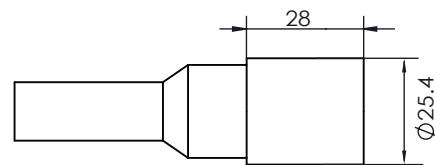
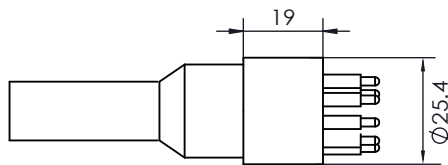
Face View (Male)



Circular Connector

Mini Inline Connector (MCIL)

Contact: 10, 12, 16



*Dimensions in mm
Thread in inches

Operation Specification

Max. voltage	300 VDC
Current rating @contact	5A
Max. current @connector	30A
Insulation resistance	>200 Mohm
Contact resistance	<0.01 ohm
Wet mating	>500
Depth rating	600 bar
Temperature rating	-40 to 60°C

Material Specification

Connector body	Chloroprene rubber
Contact	Gold plated brass
Socket	Beryllium copper
Location pin	NA
Inline cable	AWG 18 Neoprene, 60cm
O-rings	NA

* compatible with Subconn

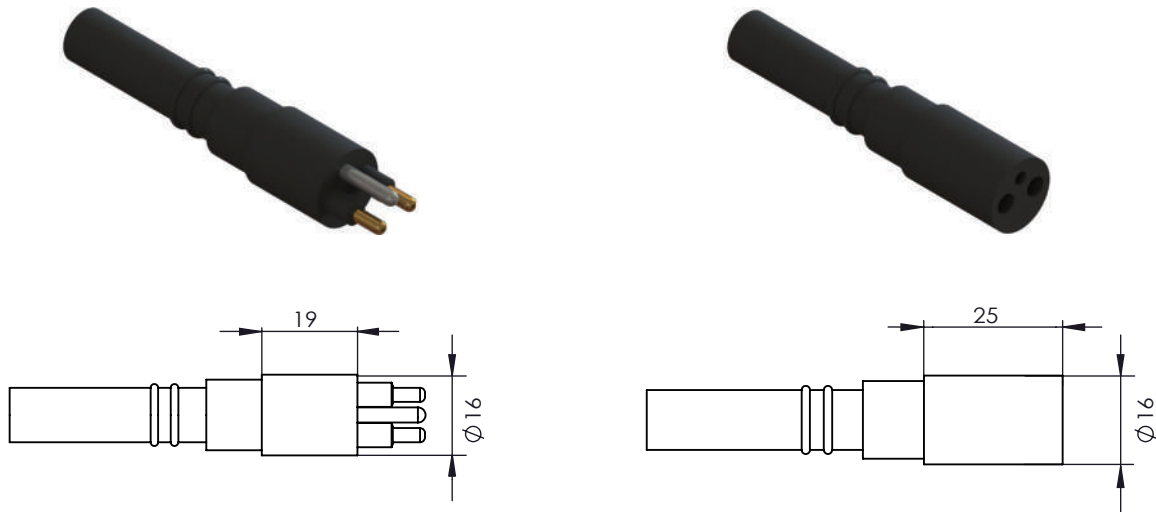
Face View (Male)



Circular Connector

Mini Overmold Connector (MCOM)

Contact: 2, 3, 4, 5, 6, 8



*Dimensions in mm
Thread in inches

Operation Specification

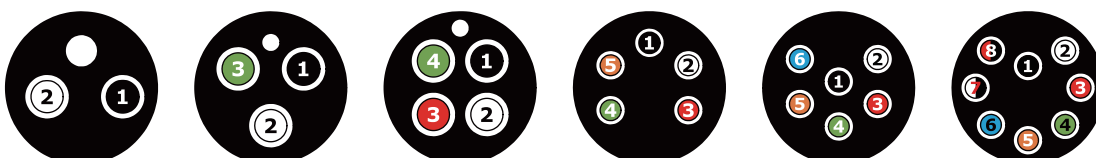
Max. voltage	300 VDC
Current rating @contact	5A
Max. current @connector	20A
Insulation resistance	>200 Mohm
Contact resistance	<0.01 ohm
Wet mating	>500
Depth rating	600 bar
Temperature rating	-40 to 60°C

Material Specification

Connector body	Chloroprene rubber
Contact	Gold plated brass
Socket	Beryllium copper
Location pin	Stainless steel 316
Bulkhead leads	2,3,4 contacts AWG 18 PTFE, 10cm 5,6,8 contacts AWG 20 PTFE, 10cm
O-rings	NA

* compatible with Subconn

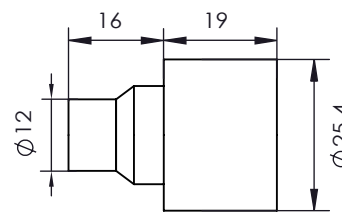
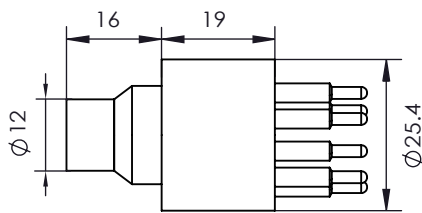
Face View (Male)



Circular Connector

Mini Overmold Connector (MCOM)

Contact: 10, 12, 16



*Dimensions in mm
Thread in inches

Operation Specification

Max. voltage	300 VDC
Current rating @contact	5A
Max. current @connector	20A
Insulation resistance	>200 Mohm
Contact resistance	<0.01 ohm
Wet mating	>500
Depth rating	600 bar
Temperature rating	-40 to 60°C

Material Specification

Connector body	Chloroprene rubber
Bulkhead body	Brass
Contact	Gold plated brass
Socket	Beryllium copper
Location pin	Stainless steel 316
Bulkhead leads	AWG 20 PTFE, 10cm
O-rings	NA

* compatible with Subconn

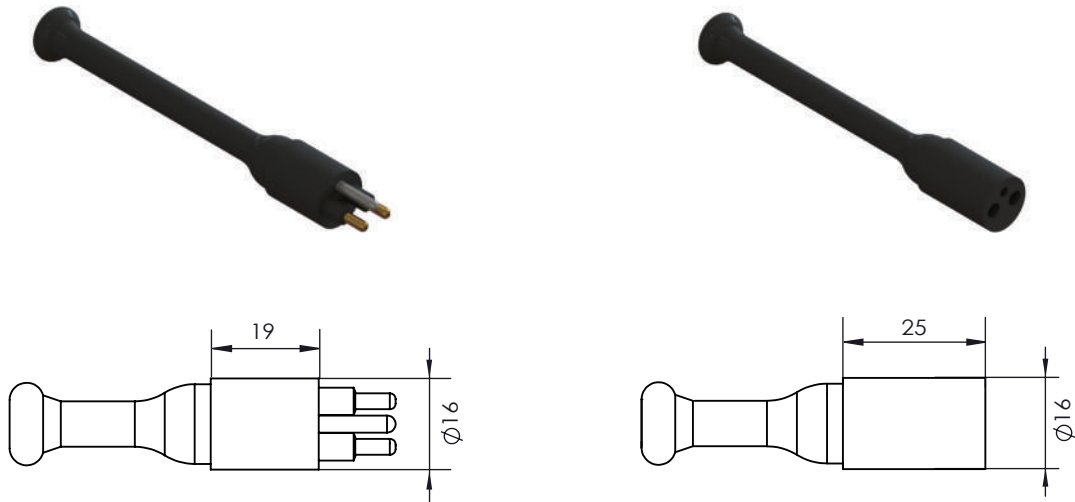
Face View (Male)



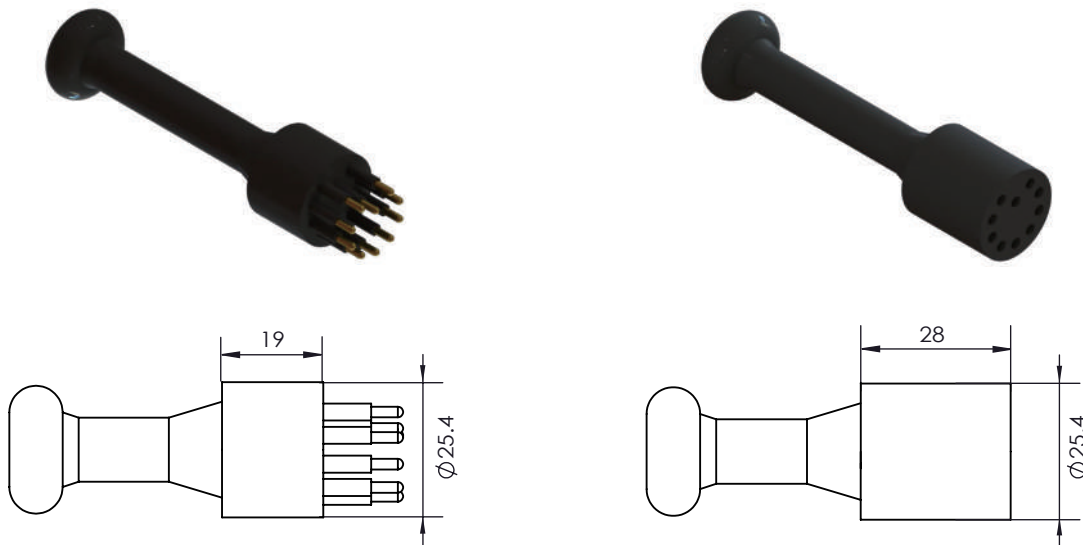
Circular Connector

MC Dummy (MCDC)

Contact: 2, 3, 4, 5, 6, 8



Contact: 10,12, 16



*Dimensions in mm
Thread in inches

Material Specification

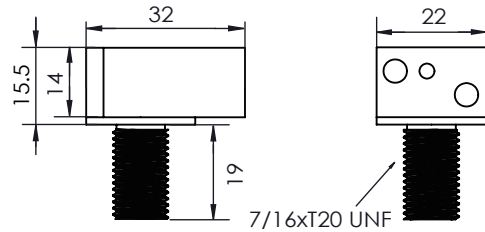
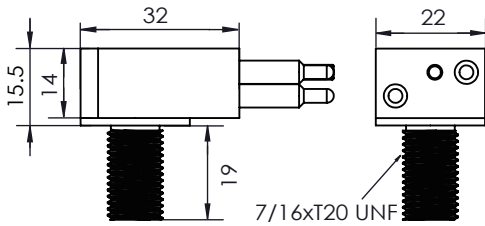
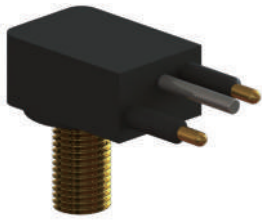
Connector body	Chloroprene rubber
Contact	Gold plated brass
Socket	NA
Location pin	Stainless steel 316

* compatible with Subconn

Low Profile Connector

Bulkhead Connector (LPBH)

Contact: 2



*Dimensions in mm
Thread in inches

Operation Specification

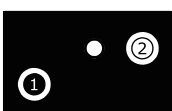
Max. voltage	600 VDC
Current rating @contact	10A
Max. current @connector	20A
Insulation resistance	>200 Mohm
Contact resistance	<0.01 ohm
Wet mating	>500
Depth rating	600 bar (300 bar for peek)
Temperature rating	-40 to 60°C

Material Specification

Connector body	Chloroprene Rubber
Bulkhead body	Brass, stainless steel 316, anodized aluminum, titanium or peek
Contact	Phosphor Bronze
Socket	Beryllium Copper
Location pin	Stainless steel 316
Bulkhead leads	AWG 18 PTFE, 30cm
O-rings	NBR 2-014

* compatible with Subconn

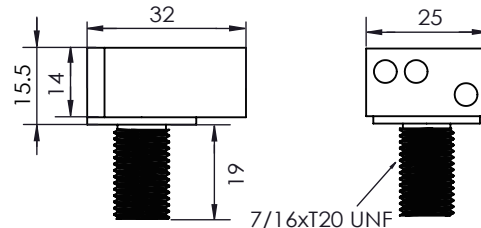
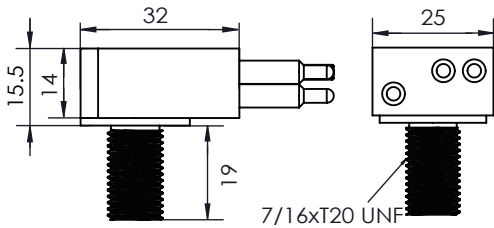
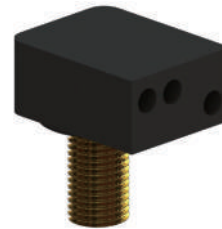
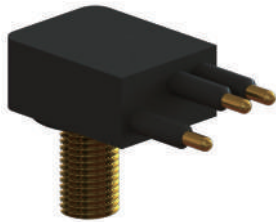
Face View (Male)



Low Profile Connector

Bulkhead Connector (LPBH)

Contact: 3, 4, 5



*Dimensions in mm
Thread in inches

Operation Specification

Max. voltage	600 VDC
Current rating @contact	10A
Max. current @connector	40A
Insulation resistance	>200 Mohm
Contact resistance	<0.01 ohm
Wet mating	>500
Depth rating	600 bar (300 bar for peek)
Temperature rating	-40 to 60°C

Material Specification

Connector body	Chloroprene Rubber
Bulkhead body	Brass, stainless steel 316, anodized aluminum, titanium or peek
Contact	Phosphor Bronze
Socket	Beryllium Copper
Location pin	NA
Bulkhead leads	AWG 18 PTFE, 30cm
O-rings	NBR 2-014

* compatible with Subconn

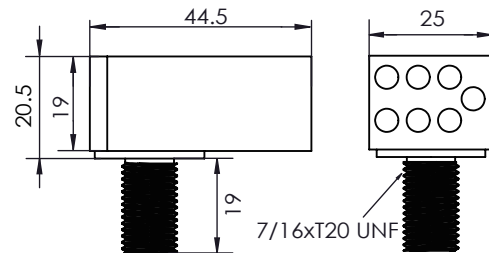
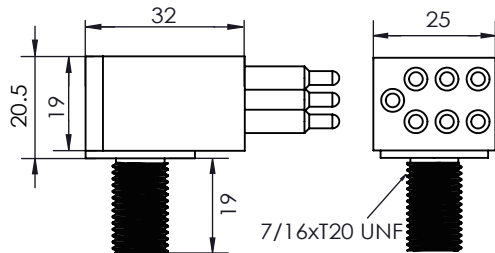
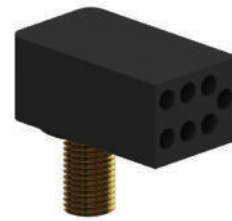
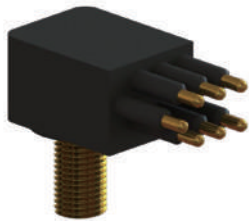
Face View (Male)



Low Profile Connector

Bulkhead Connector (LPBH)

Contact: 7



*Dimensions in mm
Thread in inches

Operation Specification

Max. voltage	600 VDC
Current rating @contact	10A
Max. current @connector	40A
Insulation resistance	>200 Mohm
Contact resistance	<0.01 ohm
Wet mating	>500
Depth rating	600 bar (300 bar for peek)
Temperature rating	-40 to 60°C

Material Specification

Connector body	Chloroprene Rubber
Bulkhead body	Brass, stainless steel 316, anodized aluminum, titanium or peek
Contact	Phosphor Bronze
Socket	Beryllium Copper
Location pin	NA
Bulkhead leads	AWG 18 PTFE, 30cm
O-rings	NBR 2-014

* compatible with Subconn

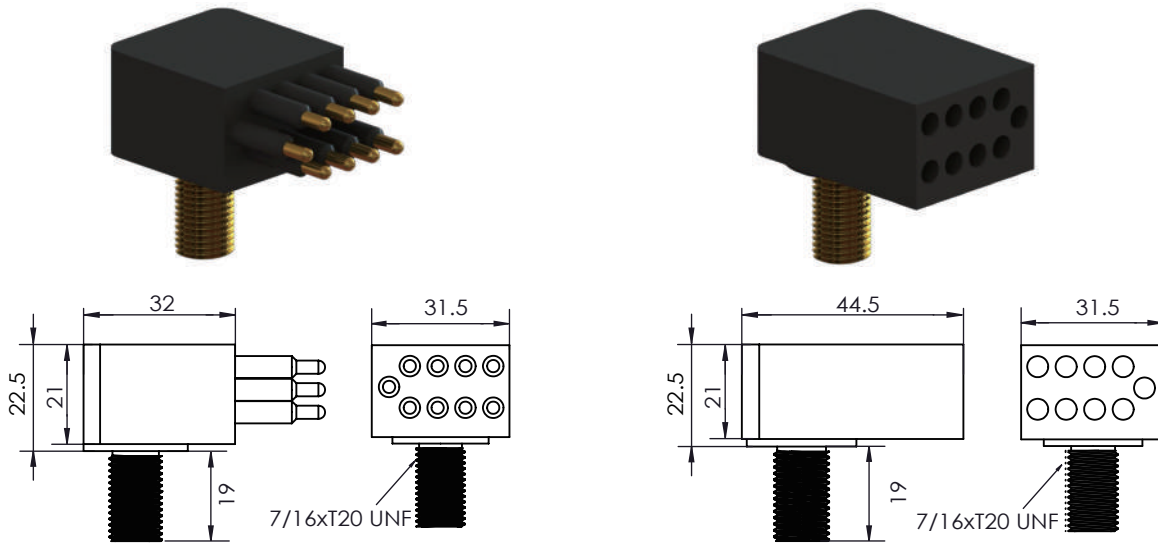
Face View (Male)



Low Profile Connector

Bulkhead Connector (LPBH)

Contact: 9



*Dimensions in mm
Thread in inches

Operation Specification

Max. voltage	600 VDC
Current rating @contact	10A
Max. current @connector	40A
Insulation resistance	>200 Mohm
Contact resistance	<0.01 ohm
Wet mating	>500
Depth rating	600 bar (300 bar for peek)
Temperature rating	-40 to 60°C

Material Specification

Connector body	Chloroprene Rubber
Bulkhead body	Brass, stainless steel 316, anodized aluminum, titanium or peek
Contact	Phosphor Bronze
Socket	Beryllium Copper
Location pin	Stainless steel 316
Bulkhead leads	AWG 18 PTFE, 30cm
O-rings	NBR 2-014

* compatible with Subconn

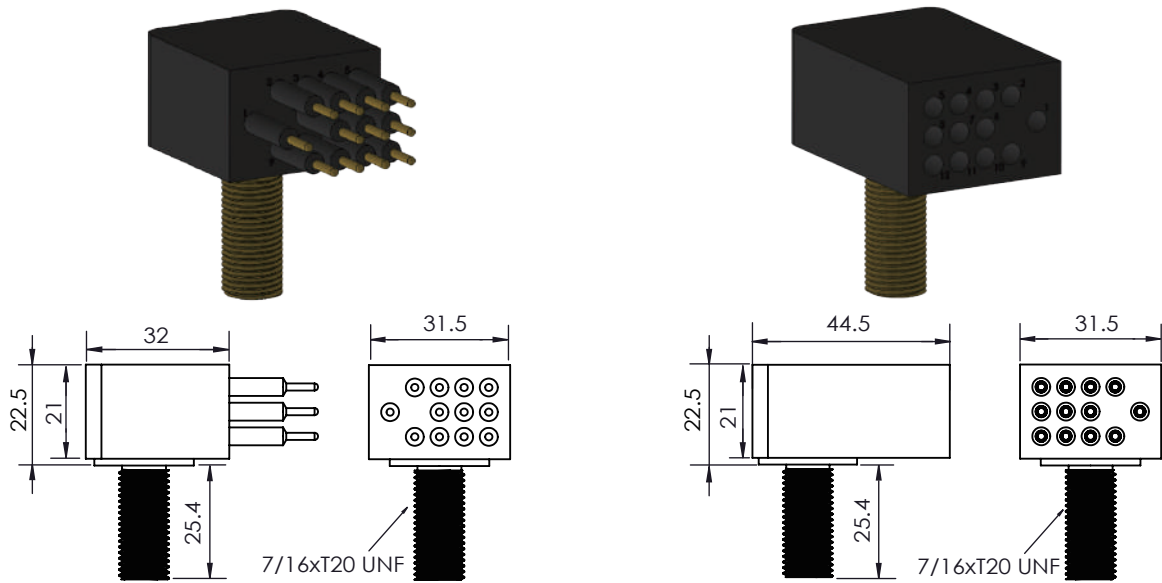
Face View (Male)



Low Profile Connector

Bulkhead Connector (LPBH)

Contact: 12



*Dimensions in mm
Thread in inches

Operation Specification

Max. voltage	600 VDC
Current rating @contact	10A
Max. current @connector	40A
Insulation resistance	>200 Mohm
Contact resistance	<0.01 ohm
Wet mating	>500
Depth rating	600 bar (300 bar for peek)
Temperature rating	-40 to 60°C

Material Specification

Connector body	Chloroprene Rubber
Bulkhead body	Brass, stainless steel 316, anodized aluminum, titanium or peek
Contact	Phosphor Bronze
Socket	Beryllium Copper
Location pin	Stainless steel 316
Bulkhead leads	AWG 18 PTFE, 30cm
O-rings	NBR 2-014

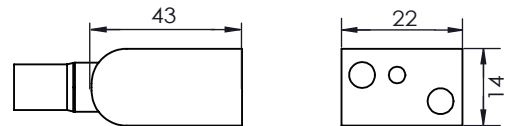
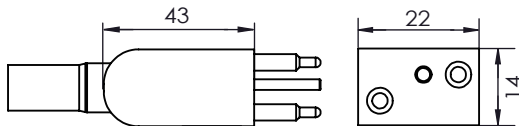
Face View (Male)



Low Profile Connector

Inline Connector (LPIL)

Contact: 2



*Dimensions in mm
Thread in inches

Operation Specification

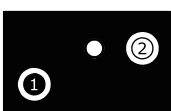
Max. voltage	600 VDC
Current rating @contact	10A
Max. current @connector	20A
Insulation resistance	>200 Mohm
Contact resistance	<0.01 ohm
Wet mating	>500
Depth rating	600 bar
Temperature rating	-40 to 60°C

Material Specification

Connector body	Chloroprene rubber
Contact	Gold plated brass
Socket	Beryllium copper
Location pin	Stainless steel 316
Inline cable	AWG 16 PTFE, 60cm
O-rings	NA

* compatible with Subconn

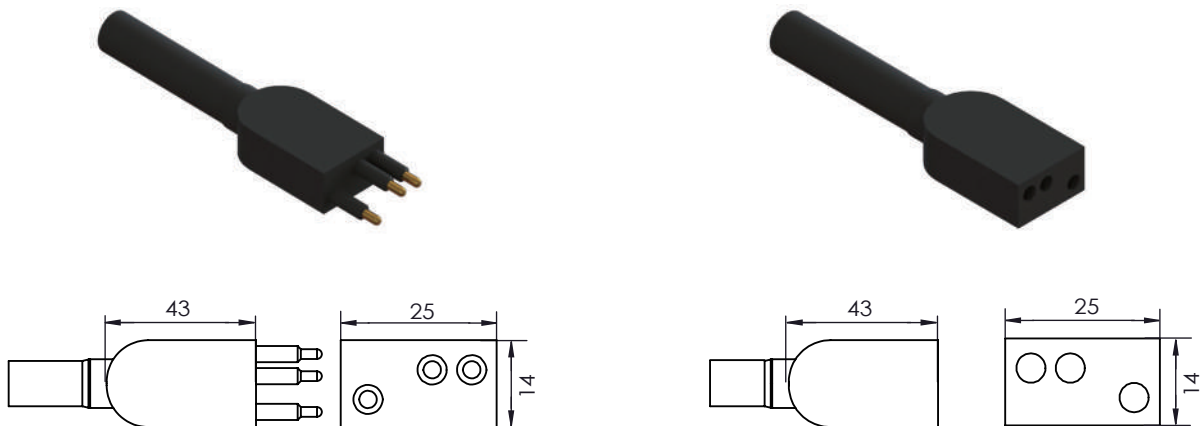
Face View (Male)



Low Profile Connector

Inline Connector (LPIL)

Contact: 3, 4, 5



*Dimensions in mm
Thread in inches

Operation Specification

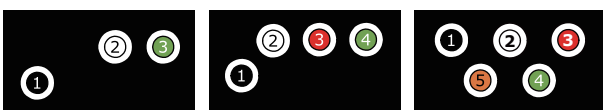
Max. voltage	600 VDC
Current rating @contact	10A
Max. current @connector	40A
Insulation resistance	>200 Mohm
Contact resistance	<0.01 ohm
Wet mating	>500
Depth rating	600 bar
Temperature rating	-40 to 60°C

Material Specification

Connector body	Chloroprene rubber
Contact	Gold plated brass
Socket	Beryllium copper
Location pin	NA
Inline cable	3,4 contacts AWG 16 Neoprene, 60cm 5 contacts AWG 18 Neoprene, 60cm
O-rings	NA

* compatible with Subconn

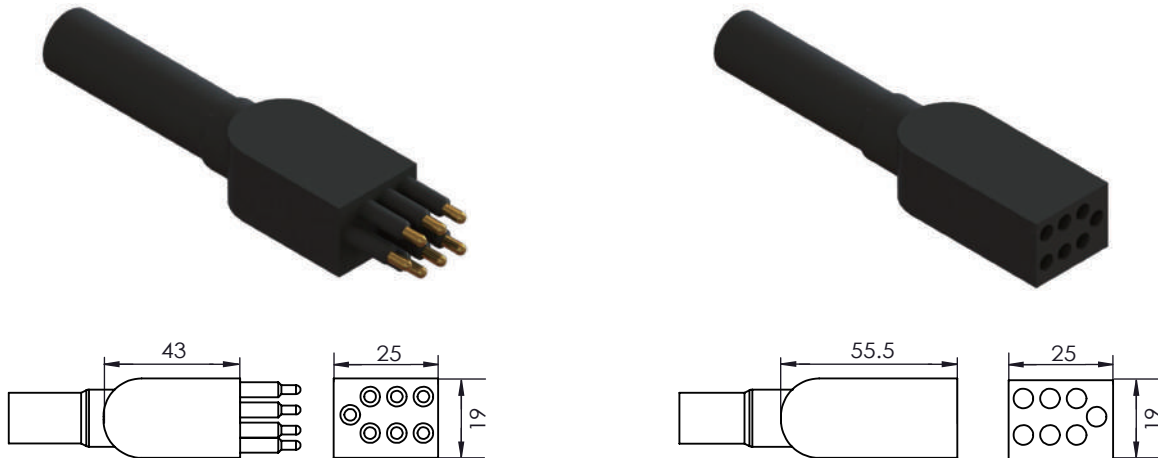
Face View (Male)



Low Profile Connector

Inline Connector (LPIL)

Contact: 7



*Dimensions in mm
Thread in inches

Operation Specification

Max. voltage	600 VDC
Current rating @contact	10A
Max. current @connector	40A
Insulation resistance	>200 Mohm
Contact resistance	<0.01 ohm
Wet mating	>500
Depth rating	600 bar
Temperature rating	-40 to 60°C

Material Specification

Connector body	Chloroprene rubber
Contact	Gold plated brass
Socket	Beryllium copper
Location pin	NA
Inline cable	AWG 16 Neoprene, 60cm
O-rings	NA

* compatible with Subconn

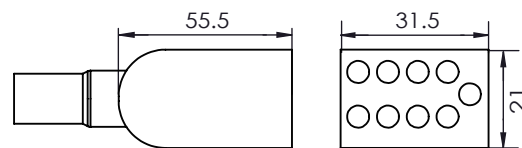
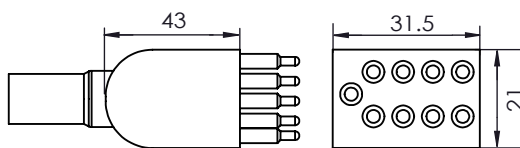
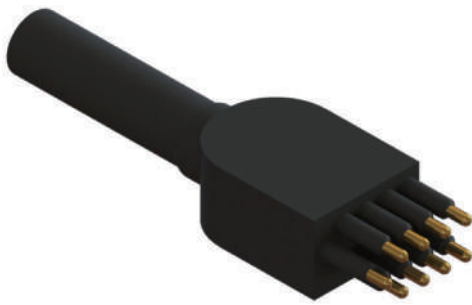
Face View (Male)



Low Profile Connector

Inline Connector (LPIL)

Contact: 9



*Dimensions in mm
Thread in inches

Operation Specification

Max. voltage	600 VDC
Current rating @contact	10A
Max. current @connector	40A
Insulation resistance	>200 Mohm
Contact resistance	<0.01 ohm
Wet mating	>500
Depth rating	600 bar
Temperature rating	-40 to 60°C

Material Specification

Connector body	Chloroprene rubber
Contact	Gold plated brass
Socket	Beryllium copper
Location pin	NA
Inline cable	AWG 16 Neoprene, 60cm
O-rings	NA

* compatible with Subconn

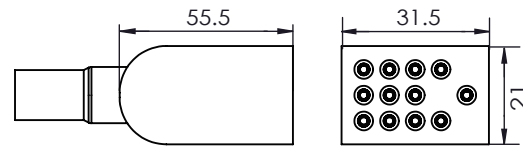
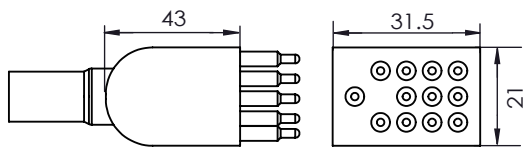
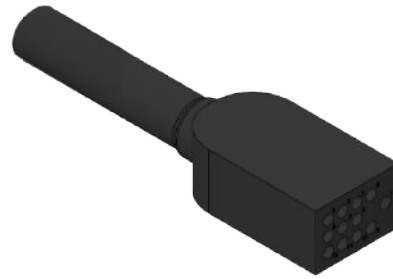
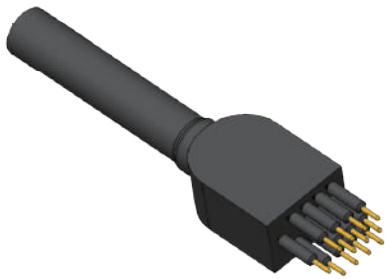
Face View (Male)



Low Profile Connector

Inline Connector (LPIL)

Contact: 12



*Dimensions in mm
Thread in inches

Operation Specification

Max. voltage	600 VDC
Current rating @contact	10A
Max. current @connector	40A
Insulation resistance	>200 Mohm
Contact resistance	<0.01 ohm
Wet mating	>500
Depth rating	600 bar
Temperature rating	-40 to 60°C

Material Specification

Connector body	Chloroprene rubber
Contact	Gold plated brass
Socket	Beryllium copper
Location pin	NA
Inline cable	AWG 18 Neoprene, 60cm
O-rings	NA

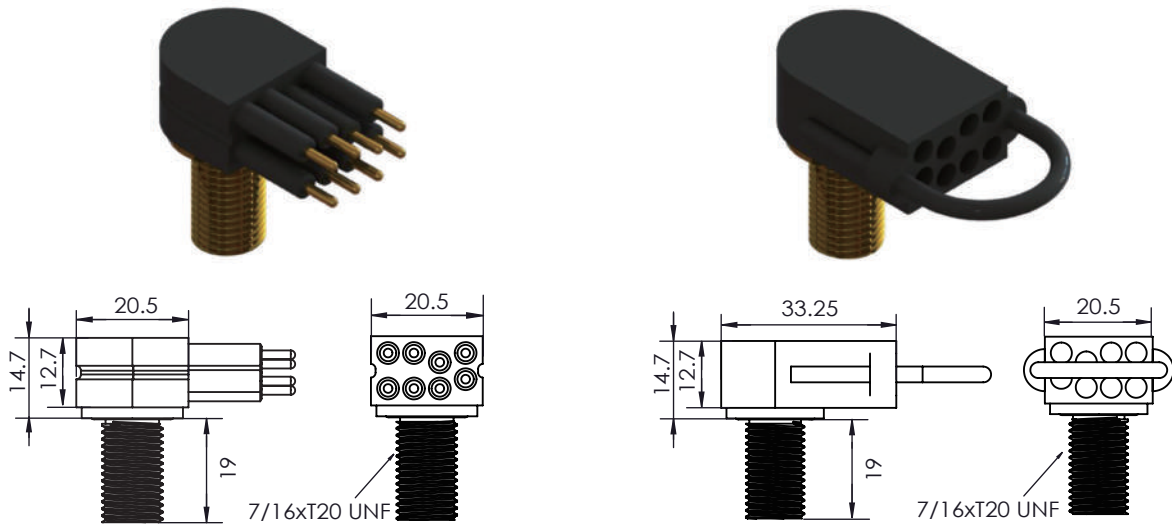
Face View (Male)



Low Profile Connector

Mini Bulkhead Connector (LPMCBH)

Contact: 2, 3, 4, 5, 6, 7, 8



*Dimensions in mm
Thread in inches

Operation Specification

Max. voltage	300 VDC
Current rating @contact	5A
Max. current @connector	20A
Insulation resistance	>200 Mohm
Contact resistance	<0.01 ohm
Wet mating	>500
Depth rating	600 bar (300 bar for peek)
Temperature rating	-40 to 60°C

Material Specification

Connector body	Chloroprene rubber
Bulkhead body	Brass, stainless steel 316, anodized aluminum, titanium or peek
Contact	Gold plated brass
Socket	Beryllium copper
Location pin	Stainless steel 316
Bulkhead leads	AWG 20 PTFE, 30cm
O-rings	NBR 2-014

* compatible with Teledyne Impulse

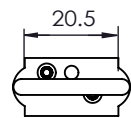
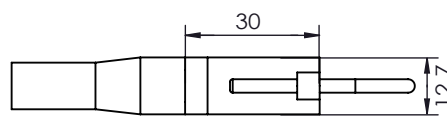
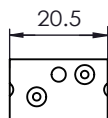
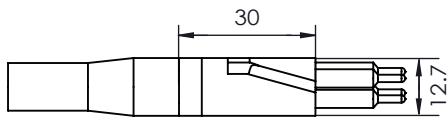
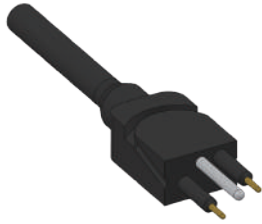
Face View (Male)



Low Profile Connector

Mini Inline Connector (LPMCIL)

Contact: 2, 3, 4, 5, 6, 7, 8



*Dimensions in mm
Thread in inches

Operation Specification

Max. voltage	300 VDC
Current rating @contact	5A
Max. current @connector	20A
Insulation resistance	>200 Mohm
Contact resistance	<0.01 ohm
Wet mating	>500
Depth rating	600 bar
Temperature rating	-40 to 60°C

Material Specification

Connector body	Chloroprene rubber
Contact	Gold plated brass
Socket	Beryllium copper
Location pin	Stainless steel 316
Inline cable	AWG 20 EPDM, 60cm
O-rings	NA

* compatible with Teledyne Impulse

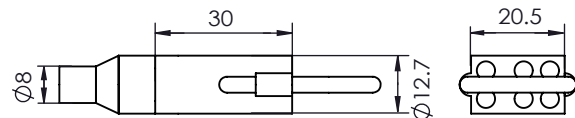
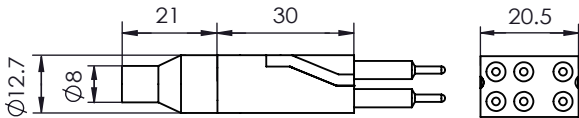
Face View (Male)



Low Profile Connector

Mini Overmold Connector (LPMCOM)

Contact: 2, 3, 4, 5, 6



*Dimensions in mm
Thread in inches

Operation Specification

Max. voltage	300 VDC
Current rating @contact	5A
Max. current @connector	20A
Insulation resistance	>200 Mohm
Contact resistance	<0.01 ohm
Wet mating	>500
Depth rating	600 bar
Temperature rating	-40 to 60°C

Material Specification

Connector body	Chloroprene rubber
Bulkhead body	Brass
Contact	Gold plated brass
Socket	Beryllium copper
Location pin	Stainless steel 316
Bulkhead leads	AWG 20 PTFE, 10cm
O-rings	NA

* compatible with Teledyne Impulse

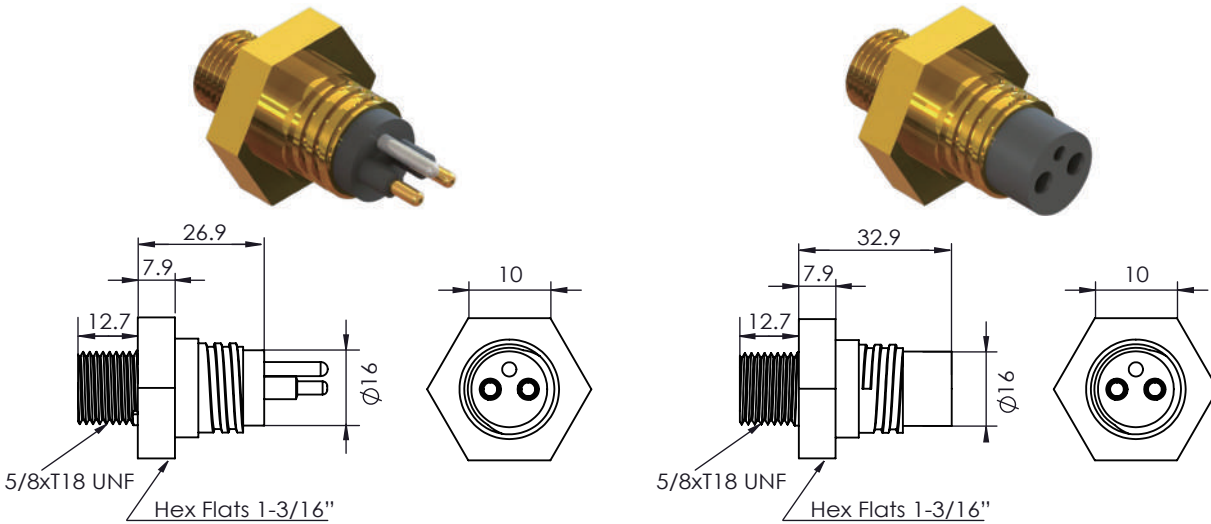
Face View (Male)



Metal Shell 1500

Mini Hex Connector (MCHX)

Contact: 2, 3, 4, 5, 6, 8



*Dimensions in mm
Thread in inches

Operation Specification

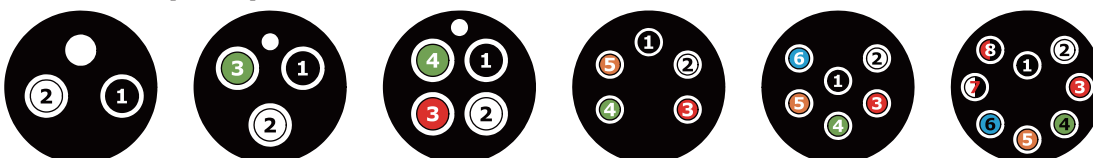
Max. voltage	300 VDC
Current rating @contact	2,3,4 contacts 10A 5,6,8 contacts 5A
Max. current @connector	20A
Insulation resistance	>200 Mohm
Contact resistance	<0.01 ohm
Wet mating	>500
Depth rating	600 bar
Temperature rating	-40 to 60°C

Material Specification

Connector body	Chloroprene rubber
Bulkhead body	Brass, stainless steel 316, anodized aluminum, titanium
Contact	Gold plated brass
Socket	Beryllium copper
Location pin	Stainless steel 316
Bulkhead leads	2,3,4 contacts AWG 18 PTFE, 30cm (AWG 20 PTFE optional) 5,6,8 contacts AWG 20 PTFE, 30cm (AWG 22 PTFE optional)
O-rings	NBR 2-116

* compatible with Subconn

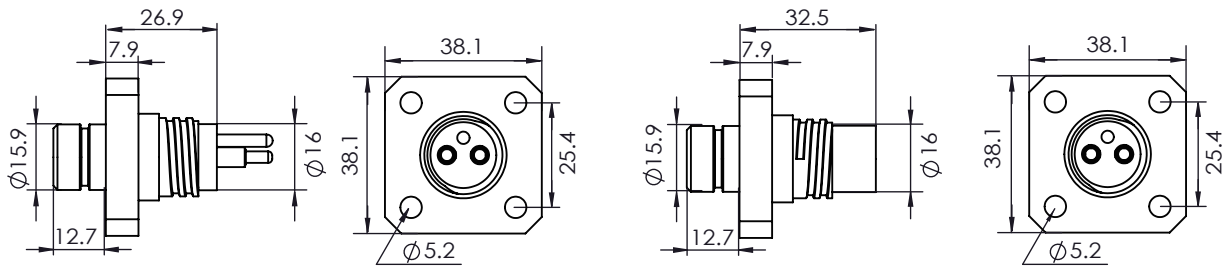
Face View (Male)



Metal Shell 1500

Mini Flange Connector (MCFG)

Contact: 2, 3, 4, 5, 6, 8



*Dimensions in mm
Thread in inches

Operation Specification

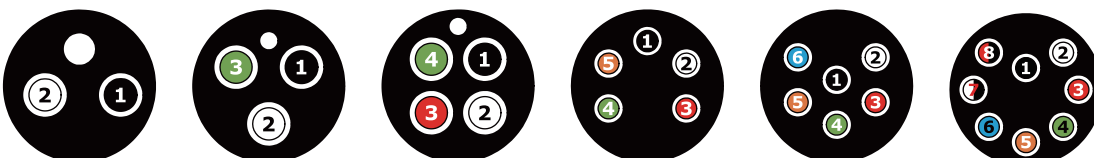
Max. voltage	300 VDC
Current rating @contact	2,3,4 contacts 10A 5,6,8 contacts 5A
Max. current @connector	20A
Insulation resistance	>200 Mohm
Contact resistance	<0.01 ohm
Wet mating	>500
Depth rating	600 bar
Temperature rating	-40 to 60°C

Material Specification

Connector body	Chloroprene rubber
Bulkhead body	Brass, stainless steel 316, anodized aluminum, titanium
Contact	Gold plated brass
Socket	Beryllium copper
Location pin	Stainless steel 316
Bulkhead leads	2,3,4 contacts AWG 18 PTFE, 30cm (AWG 20 PTFE optional) 5,6,8 contacts AWG 20 PTFE, 30cm (AWG 22 PTFE optional)
O-rings	NBR 2-116; S-14

* compatible with Subconn

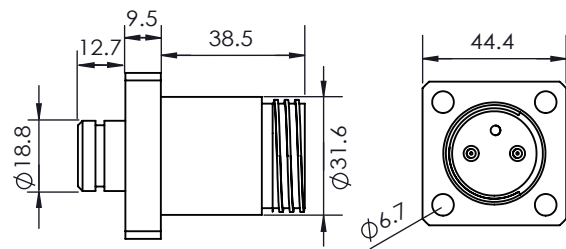
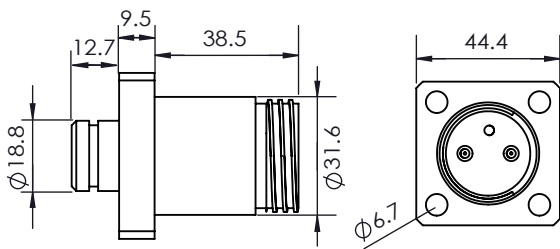
Face View (Male)



Metal Shell 2000

Flange Connector

Contact: 2, 3, 4, 10(mini), 12 (mini)



*Dimensions in mm
Thread in inches

Operation Specification

Max. voltage	2,3,4 contacts 600 VDC 10,12 contacts 300VDC
Current rating @contact	2,3,4 contacts 10A 10,12 contacts 5A
Max. current @connector	30A
Insulation resistance	>200 Mohm
Contact resistance	<0.01 ohm
Wet mating	>500
Depth rating	600 bar
Temperature rating	-40 to 60°C

Material Specification

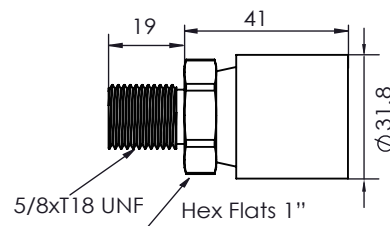
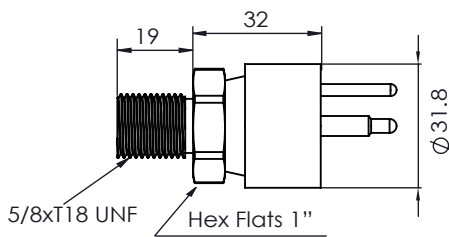
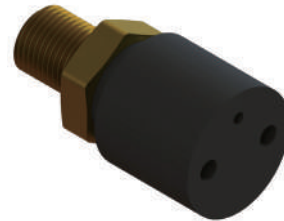
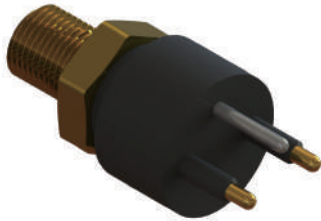
Connector body	Chloroprene rubber
Bulkhead body	Brass, stainless steel 316
Contact	Gold plated brass
Socket	Beryllium copper
Location pin	Stainless steel 316
Bulkhead leads	2,3,4 contacts AWG 18 PTFE, 30cm 10,12 contacts AWG 20 PTFE, 30cm
O-rings	NBR

* compatible with Subconn

Power Connector

Power Battery Bulkhead Connector (PBBH)

Contact: 2, 3, 4



*Dimensions in mm
Thread in inches

Operation Specification

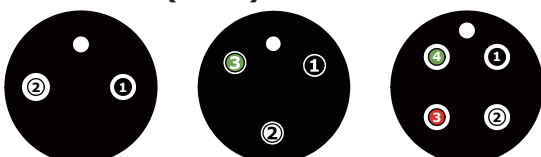
Max. voltage	600 VDC
Current rating @contact	25A
Max. current @connector	50A
Insulation resistance	>200 Mohm
Contact resistance	<0.01 ohm
Wet mating	>500
Depth rating	600 bar
Temperature rating	-40 to 60°C

Material Specification

Connector body	Chloroprene rubber
Bulkhead body	Brass, stainless steel 316 or titanium
Contact	Gold plated brass
Socket	Beryllium copper
Location pin	Stainless steel 316
Bulkhead leads	2,3 contacts AWG 10 PTFE, 30cm 4 contacts AWG 12 PTFE, 30cm
O-rings	NBR 2-017

* compatible with Subconn

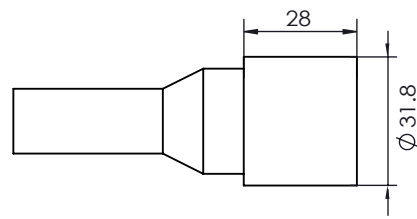
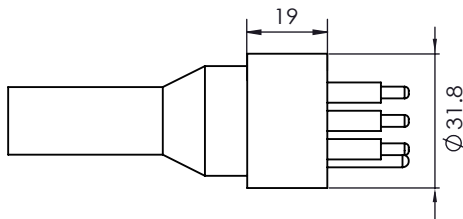
Face View (Male)



Power Connector

Power Battery Inline Connector (PBIL)

Contact: 2, 3, 4



*Dimensions in mm
Thread in inches

Operation Specification

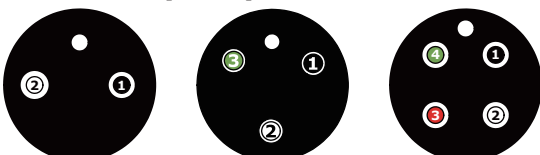
Max. voltage	600 VDC
Current rating @contact	25A
Max. current @connector	50A
Insulation resistance	>200 Mohm
Contact resistance	<0.01 ohm
Wet mating	>500
Depth rating	600 bar
Temperature rating	-40 to 60°C

Material Specification

Connector body	Chloroprene rubber
Contact	Gold plated brass
Socket	Beryllium copper
Location pin	Stainless steel 316
Inline cable	AWG 10 Neoprene, 60cm
O-rings	NA

* compatible with Subconn

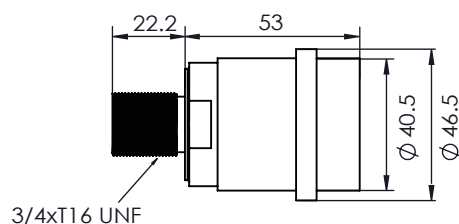
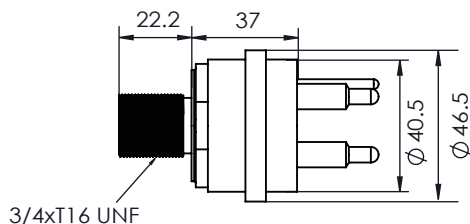
Face View (Male)



Power Connector

High Power Bulkhead Connector (HPBH)

Contact: 4



*Dimensions in mm
Thread in inches

Operation Specification

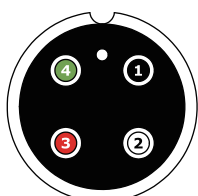
Max. voltage	600 VDC
Current rating @contact	50A
Max. current @connector	200A
Insulation resistance	>200 Mohm
Contact resistance	<0.01 ohm
Wet mating	>500
Depth rating	600 bar
Temperature rating	-40 to 60°C

Material Specification

Connector body	Chloroprene rubber
Bulkhead body	Brass, stainless steel 316 or titanium
Contact	Gold plated brass
Socket	Beryllium copper
Location pin	Stainless steel 316
Bulkhead leads	AWG 10 PTFE, 30cm
O-rings	NBR 2-022

* compatible with Subconn

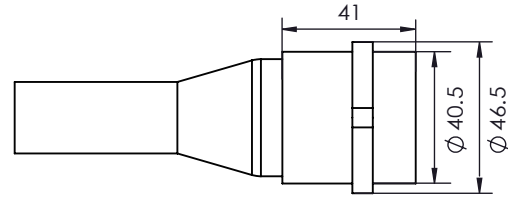
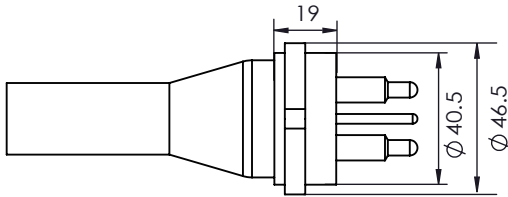
Face View (Male)



Power Connector

High Power Inline Connector (HPIL)

Contact: 4



*Dimensions in mm
Thread in inches

Operation Specification

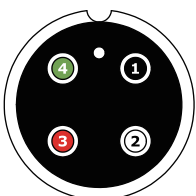
Max. voltage	600 VDC
Current rating @contact	50A
Max. current @connector	200A
Insulation resistance	>200 Mohm
Contact resistance	<0.01 ohm
Wet mating	>500
Depth rating	600 bar
Temperature rating	-40 to 60°C

Material Specification

Connector body	Chloroprene rubber
Contact	Gold plated brass
Socket	Beryllium copper
Location pin	Stainless steel 316
Inline cable	AWG 8 Neoprene, 60cm
O-rings	NA

* compatible with Subconn

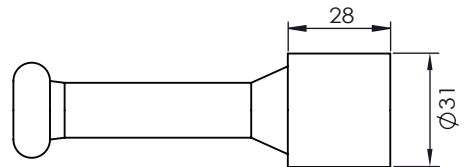
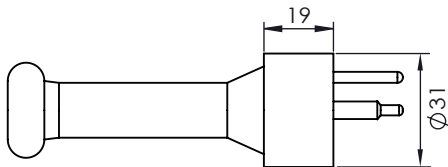
Face View (Male)



Power Connector

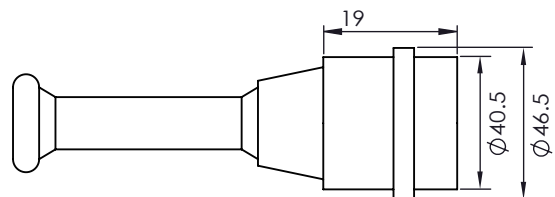
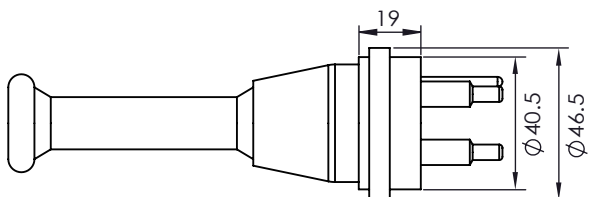
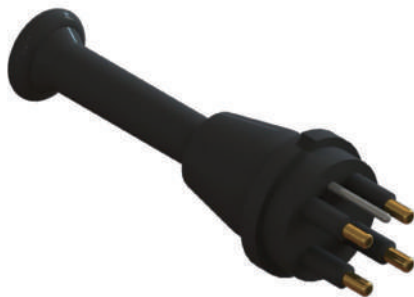
Dummy for Power Battery Connector (PBDC)

Contact: 2, 3, 4



Dummy for High Power Connector (HPDC)

Contact: 4



*Dimensions in mm
Thread in inches

Material Specification

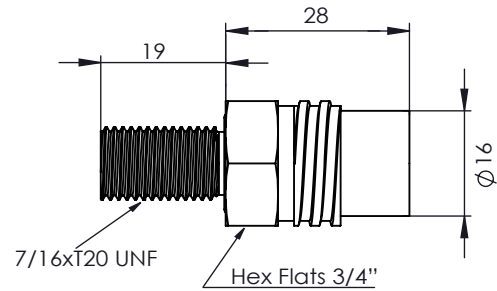
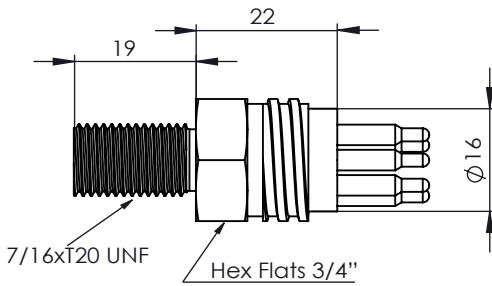
Connector body	Chloroprene rubber
Contact	Gold plated brass
Socket	NA
Location pin	Stainless steel 316

* compatible with Subconn

Ethernet Connector

Mini Bulkhead Connector (MCBH8E)

Contact: 8



*Dimensions in mm
Thread in inches

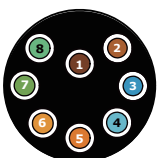
Operation Specification

Max. voltage	250 VDC
Data rate	>1 Gbit/s
Insulation resistance	>200 Mohm
Contact resistance	<0.01 ohm
Wet mating	>500
Depth rating	600 bar
Temperature rating	-40 to 60°C

Material Specification

Connector body	Chloroprene rubber
Bulkhead body	Brass, stainless steel 316 or titanium
Contact	Gold plated brass
Socket	Beryllium copper
Bulkhead leads	CAT 5E patch cable, 100cm
O-rings	NBR 2-014

Face View (Male)



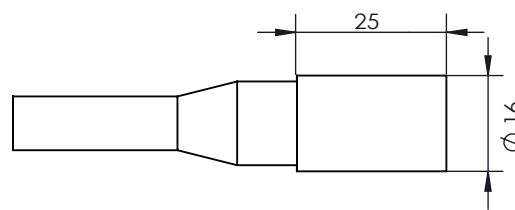
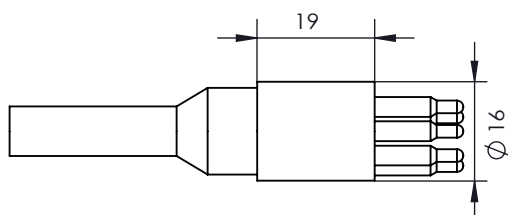
1-2 Brown, Light brown *
3-4 Blue, Light blue *
* Twisted pairs

5-6 Orange, Light orange *
7-8 Green, Light green*

Ethernet Connector

Mini Inline Connector (MCIL8E)

Contact: 8



*Dimensions in mm
Thread in inches

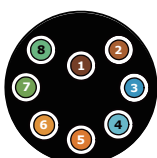
Operation Specification

Max. voltage	250 VDC
Data rate	>1 Gbit/s
Insulation resistance	>200 Mohm
Contact resistance	<0.01 ohm
Wet mating	>500
Depth rating	600 bar
Temperature rating	-40 to 60°C

Material Specification

Connector body	Chloroprene rubber
Contact	Gold plated brass
Socket	Beryllium copper
Inline cable	4 twisted pairs, AWG 24, 100cm
O-rings	NA

Face View (Male)



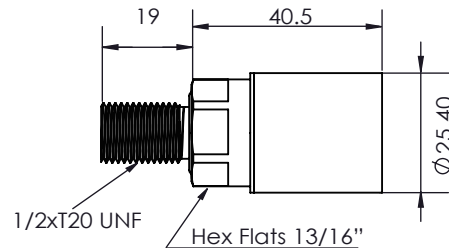
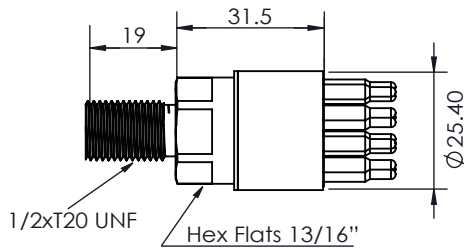
1-2 Brown, Light brown *
3-4 Blue, Light blue *
* Twisted pairs

5-6 Orange, Light orange *
7-8 Green, Light green*

Power Ethernet Connector

Mini Bulkhead Connector (MCBH13E)

Contact: 13



*Dimensions in mm
Thread in inches

Operation Specification

Voltage rating	600 V DC/AC rms
Voltage rating on data wire	250 V DC/AC rms
Current rating on power wire	4 A per contact (max 16 A per connector)
Data rate	>1 Gbit/s (up to 75m)
Insulation resistance	>200 Mohm
Contact resistance	<0.01 ohm
Wet mating	>500
Depth rating	600 bar
Temperature rating (water)	-4 to 60°C
Temperature rating (air)	-40 to 60°C

Material Specification

Connector body	Chloroprene rubber
Bulkhead body	Brass, stainless steel 316 or titanium
Contact (male)	Gold plated brass
Socket	Beryllium copper
Bulkhead leads (100cm)	CAT 5E patch cable, 4 x 20AWG, 0.52mm ² with coloured wires
O-rings	NBR 2-015

* compatible with Subconn

Face View (Male)



- 1 Black
- 2 Orange
- 3 White

* Twisted pairs

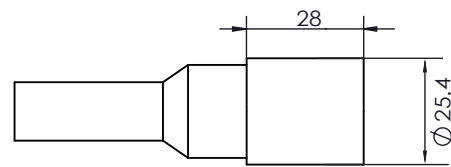
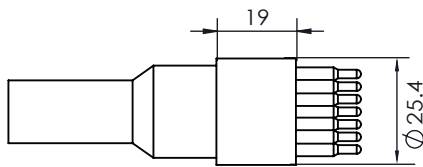
- 4-5 Brown, Light brown *
- 6-7 Blue, Light blue *
- 8-9 Orange, Light orange *

- 10-11 Green, Light green*
- 12 Red
- 13 Green

Power Ethernet Connector

Mini Inline Connector (MCIL13E)

Contact: 13



*Dimensions in mm
Thread in inches

Operation Specification

Voltage rating	600 V DC/AC rms
Voltage rating on data wire	250 V DC/AC rms
Current rating on power wire	4 A per contact (max 16 A per connector)
Data rate	>1 Gbit/s (up to 75m)
Insulation resistance	>200 Mohm
Contact resistance	<0.01 ohm
Wet mating	>500
Depth rating	600 bar
Temperature rating (water)	-4 to 60°C
Temperature rating (air)	-40 to 60°C

Material Specification

Connector body	Chloroprene rubber
Contact	Gold plated brass
Socket	Beryllium copper
Inline cable	4 twisted pairs, AWG 24, 100cm Power conductors x 4, AWG 18 Screen: Tinned copper braid
O-rings	NA

* compatible with Subconn

Face View (Male)



- 1 Black
- 2 Screen
- 3 White
- * Twisted pairs

- 4-5 Brown, Light brown *
- 6-7 Blue, Light blue *
- 8-9 Orange, Light orange *

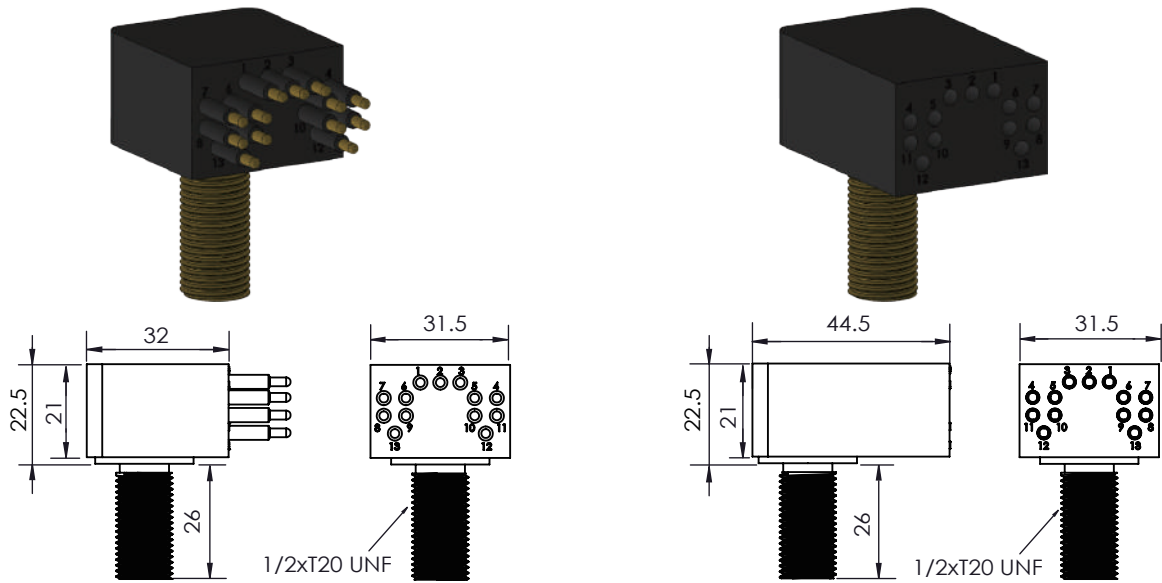
- 10-11 Green, Light green*
- 12 Red
- 13 Green

Low Profile Ethernet Connector



Bulkhead Connector (LPBHE)

Contact: 13



*Dimensions in mm
Thread in inches

Operation Specification

Voltage rating	600 V DC/AC rms
Voltage rating on data wire	250 V DC/AC rms
Current rating on power wire	4 A per contact (max 16 A per connector)
Data rate	>1 Gbit/s (up to 75m)
Insulation resistance	>200 Mohm
Contact resistance	<0.01 ohm
Wet mating	>500
Depth rating	600 bar
Temperature rating (water)	-4 to 60°C
Temperature rating (air)	-40 to 60°C

Material Specification

Connector body	Chloroprene rubber
Bulkhead body	Brass, stainless steel 316 or titanium
Contact (male)	Gold plated brass
Socket	Beryllium copper
Bulkhead leads (100cm)	CAT 5E patch cable, 4 x 20AWG, 0.52mm ² with coloured wires
O-rings	Nitrile

Face View (Male)



- 1 Black
- 2 Orange
- 3 White
- 4-5 Brown, Light brown *
- 6-7 Blue, Light blue *
- 8-9 Orange, Light orange *
- 10-11 Green, Light green*
- 12 Red
- 13 Green

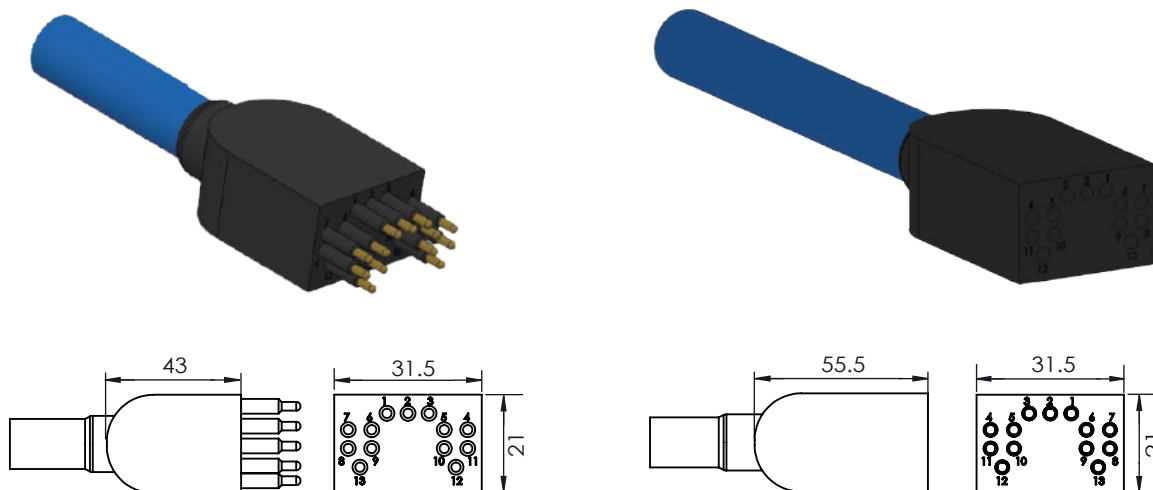
* Twisted pairs

Low Profile Ethernet Connector



Inline Connector (LPILE)

Contact: 13



*Dimensions in mm
Thread in inches

Operation Specification

Voltage rating	600 V DC/AC rms
Voltage rating on data wire	250 V DC/AC rms
Data rate	>1 Gbit/s (up to 75m)
Insulation resistance	>200 Mohm
Contact resistance	<0.01 ohm
Wet mating	>500
Depth rating	600 bar
Temperature rating (water)	-4 to 60°C
Temperature rating (air)	-40 to 60°C

Material Specification

Connector body	Chloroprene rubber
Contact	Gold plated brass
Socket	Beryllium copper
Inline cable	4 twisted pairs, AWG 24, 100cm Power conductors x 4, AWG 18 Screen: Tinned copper braid
O-rings	NA

Face View (Male)



- 1 Black
- 2 Screen
- 3 White
- * Twisted pairs

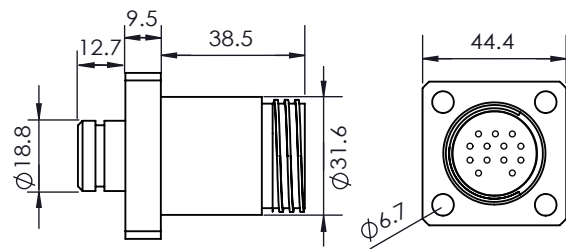
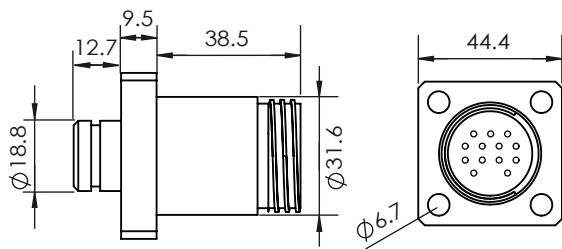
- 4-5 Brown, Light brown *
- 6-7 Blue, Light blue *
- 8-9 Orange, Light orange *

- 10-11 Green, Light green *
- 12 Red
- 13 Green

Ethernet Metal Shell 2013

Flange Connector

Contact: 13



*Dimensions in mm
Thread in inches

Operation Specification

Voltage rating	600 V DC/AC rms
Voltage rating on data wire	250 V DC/AC rms
Current rating on power wire	4 A per contact (max 16 A per connector)
Data rate	>1 Gbit/s (up to 75m)
Insulation resistance	>200 Mohm
Contact resistance	<0.01 ohm
Wet mating	>500
Depth rating	600 bar
Temperature rating (water)	-4 to 60°C
Temperature rating (air)	-40 to 60°C

Material Specification

Connector body	Chloroprene rubber
Bulkhead body	Brass, stainless steel 316 or titanium
Contact (male)	Gold plated brass
Socket	Beryllium copper
Bulkhead leads (100cm)	CAT 5E patch cable, 4 x 20AWG, 0.52mm ² with coloured wires
O-rings	Nitrile

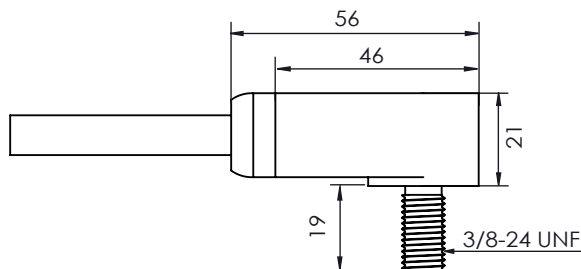
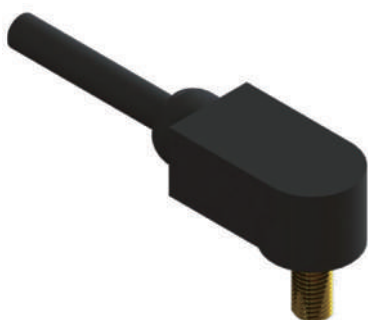
* compatible with Subconn

Penetrator Connector



A type (PNTRA)

Contact: 2, 3, 4, 5, 6



*Dimensions in mm
Thread in inches

Operation Specification

Max. voltage	300/600 VDC depends on cable
Current rating @contact	Depends on wire and conductor size
Max. current @connector	Depends on wire and conductor size
Insulation resistance	>200 Mohm
Depth rating	600 bar
Temperature rating	-40 to 60°C

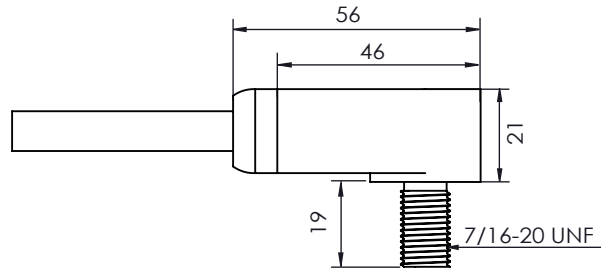
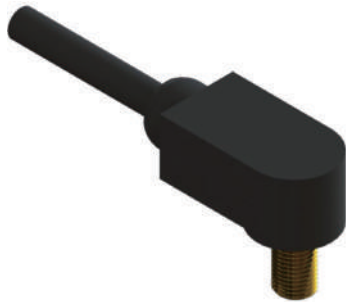
Material Specification

Connector body	Chloroprene Rubber
Bulkhead body	Brass, stainless steel 316
Bulkhead leads	Customer specified
Inline cable	Customer specified(DWTEK cable only)
O-rings	NBR 2-014

Penetrator Connector

B type (PNTRB)

Contact: 2, 3, 4, 5, 6, 8



*Dimensions in mm
Thread in inches

Operation Specification

Max. voltage	300/600 VDC depends on cable
Current rating @contact	Depends on wire and conductor size
Max. current @connector	Depends on wire and conductor size
Insulation resistance	>200 Mohm
Depth rating	600 bar
Temperature rating	-40 to 60°C

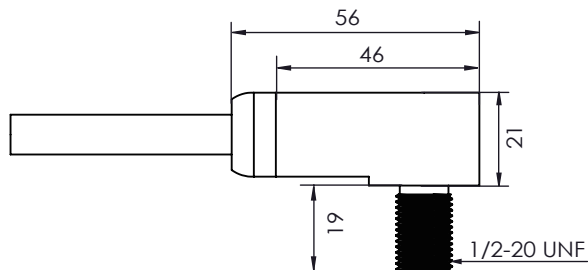
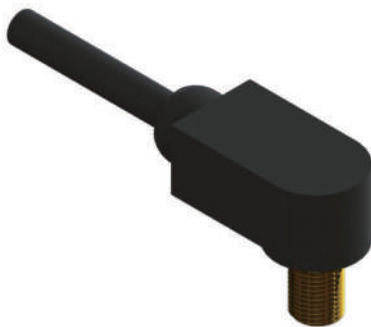
Material Specification

Connector body	Chloroprene Rubber
Bulkhead body	Brass, stainless steel 316
Bulkhead leads	Customer specified
Inline cable	Customer specified(DWTEK cable only)
O-rings	NBR 2-014

Penetrator Connector

C type (PNTRC)

Contact: 2, 3, 4, 5, 6, 8



*Dimensions in mm
Thread in inches

Operation Specification

Max. voltage	300/600 VDC depends on cable
Current rating @contact	Depends on wire and conductor size
Max. current @connector	Depends on wire and conductor size
Insulation resistance	>200 Mohm
Depth rating	600 bar
Temperature rating	-40 to 60°C

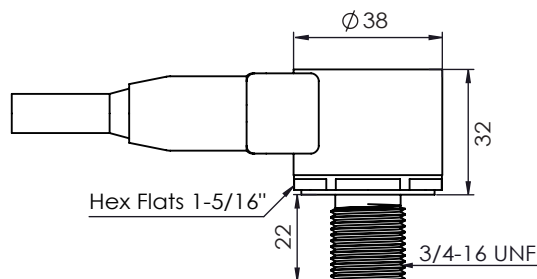
Material Specification

Connector body	Chloroprene Rubber
Bulkhead body	Brass, stainless steel 316
Bulkhead leads	Customer specified
Inline cable	Customer specified(DWTEK cable only)
O-rings	NBR 2-015

Penetrator Connector

D type (PNTRD)

Contact: 2, 3, 4, 5, 6, 8



*Dimensions in mm
Thread in inches

Operation Specification

Max. voltage	300/600 VDC depends on cable
Current rating @contact	Depends on wire and conductor size
Max. current @connector	Depends on wire and conductor size
Insulation resistance	>200 Mohm
Depth rating	600 bar
Temperature rating	-40 to 60°C

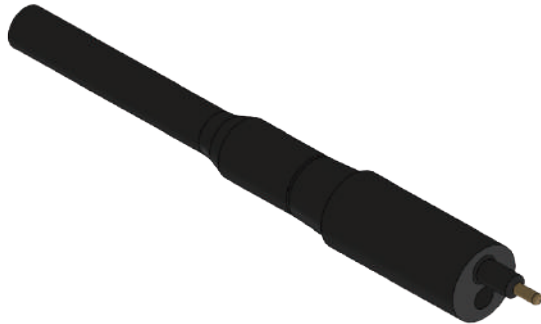
Material Specification

Connector body	Chloroprene rubber
Bulkhead body	Brass, stainless steel 316
Bulkhead leads	Customer specified
Inline cable	Customer specified(DWTEK cable only)
O-rings	NBR 2-022

Diving Connector

2 Pole Inline Connector (EO)

Contact: 2



*Dimensions in mm
Thread in inches

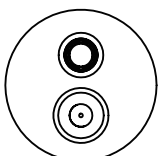
Operation Specification

Max. voltage	600 VDC
Max. current @connector	12A
Insulation resistance	>200 Mohm
Contact resistance	<0.01 ohm
Depth rating	600 bar
Temperature rating	-40 to 60°C

Material Specification

Connector body	Chloroprene rubber
Contact	Gold plated brass
Socket	Beryllium copper
Inline cable	AWG 16 Neoprene, 60cm (AWG 18 optional)

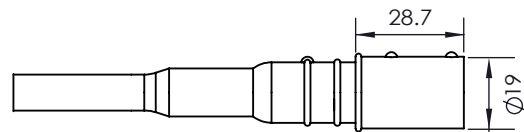
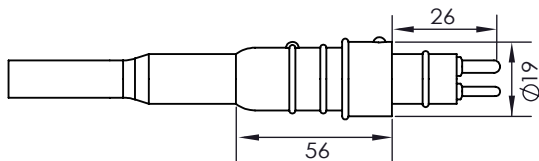
Face View (Male)



Rubber Molded Connector

G size Inline Cable (RG)

Contact: 2, 3, 4



*Dimensions in mm
Thread in inches

Operation Specification

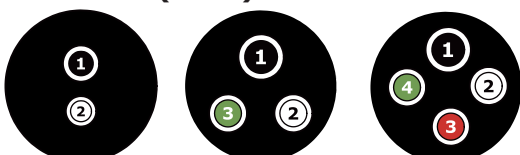
Max. voltage	600 VDC
Current rating @contact	5A
Max. current @connector	20A
Insulation resistance	>200 Mohm
Contact resistance	<0.01 ohm
Wet mating	>500
Depth rating	600 bar
Temperature rating	-40 to 60°C

Material Specification

Connector body	Chloroprene rubber
Contact (male)	Gold plated brass
Socket (female)	Beryllium copper
Inline cable	AWG 18 Neoprene, 60cm

* compatible with Seacon "RMG"

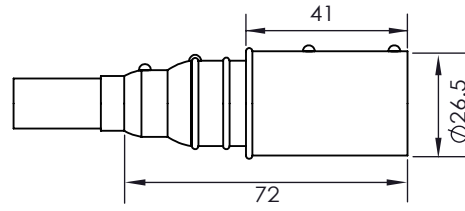
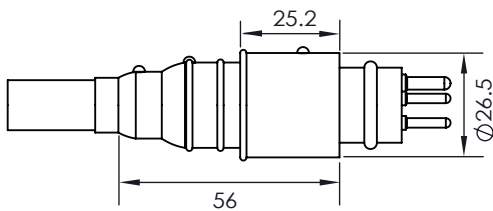
Face View (Male)



Rubber Molded Connector

K size Inline Cable (RK)

Contact: 5



*Dimensions in mm
Thread in inches

Operation Specification

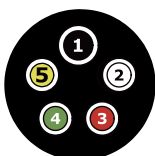
Max. voltage	600 VDC
Current rating @contact	10A
Max. current @connector	30A
Insulation resistance	>200 Mohm
Contact resistance	<0.01 ohm
Wet mating	>500
Depth rating	600 bar
Temperature rating	-40 to 60°C

Material Specification

Connector body	Chloroprene rubber
Contact (male)	Gold plated brass
Socket (female)	Beryllium copper
Inline cable	AWG 18 Neoprene, 60cm

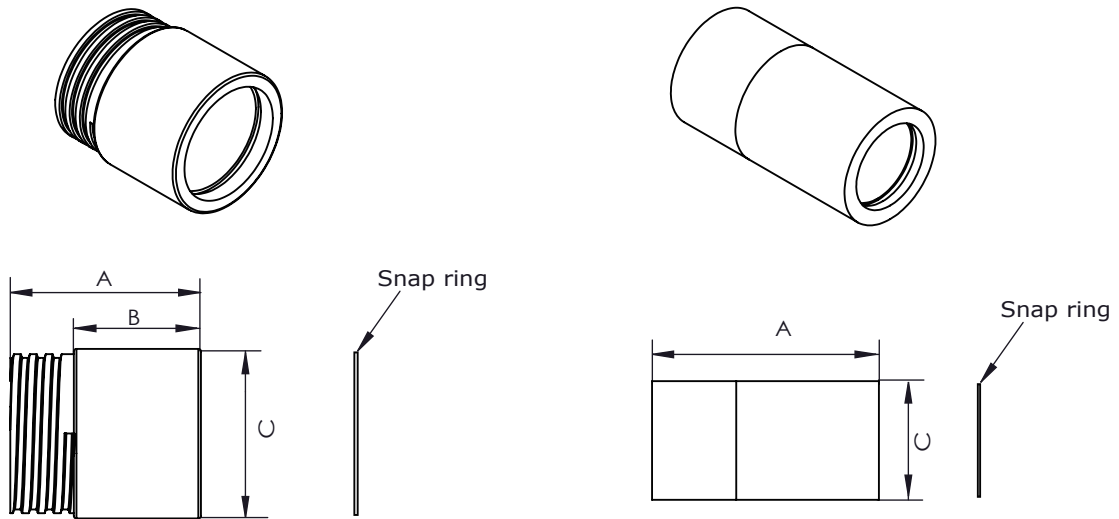
* compatible with Seacon "RMK"

Face View (Male)



Accessories

Locking Sleeve



Data Table

Item no.	Dim. A (mm)	Dim. B (mm)	Dia. C (mm)	Matching connector
MCLSM	22	12	22	MCIL2~8
MCLSF	42	-	22	MCBH2~8, MCIL2~8
SCLSAM	36	24	32	MCBH10~16, MCIL10~16, SCBH2~5, SCIL2~5
SCLSAF	32.5	-	32	MCBH10~16, MCIL10~16, SCBH2~5, SCIL2~5
SCLSBM	36.9	24	40	SCBH6~10, SCIL6~10, PBBH2~4, PBIL2~4
SCLSBF	32.5	-	40	SCBH6~10, SCIL6~10, PBBH2~4, PBIL2~4
SCLSCM	31.8	19.6	58	SCBH12~16, SCIL12~16, HPBH4, HPIL4
SCLSCF	30	-	58	SCBH12~16, SCIL12~16, HPBH4, HPIL4

Material Specification

Locking sleeve	POM
Snap ring	Stainless steel 316

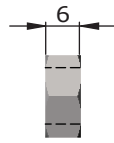
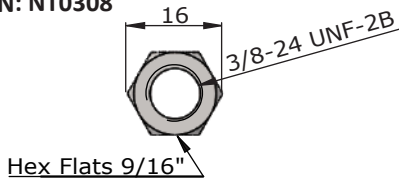
* compatible with Subconn

Accessories

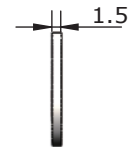
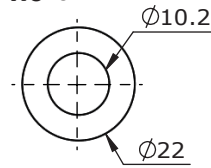
Nuts and Washers



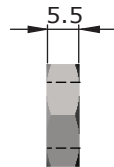
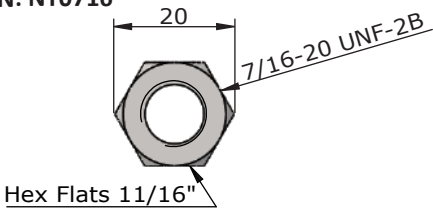
P/N: NT0308



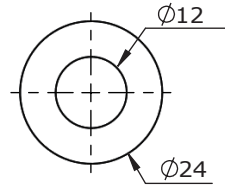
P/N: WS1022



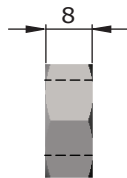
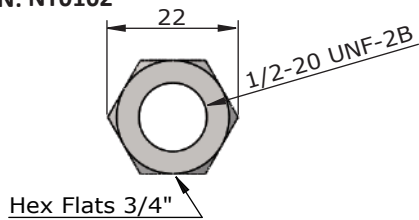
P/N: NT0716



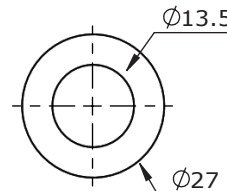
P/N: WS1224



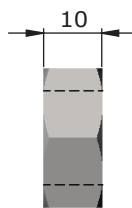
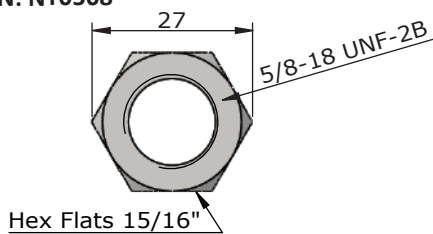
P/N: NT0102



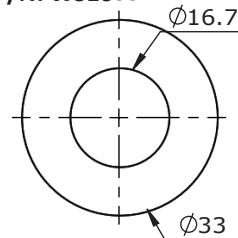
P/N: WS1324



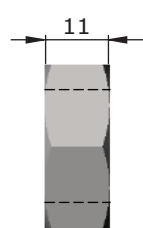
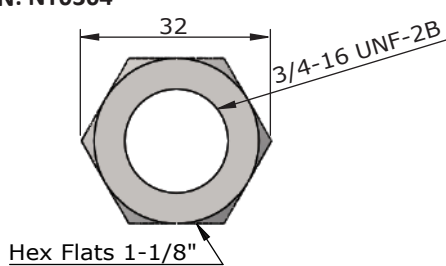
P/N: NT0508



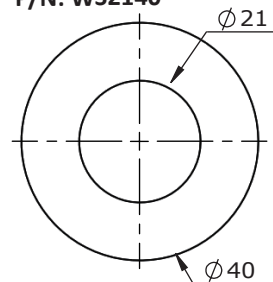
P/N: WS1633



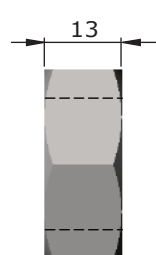
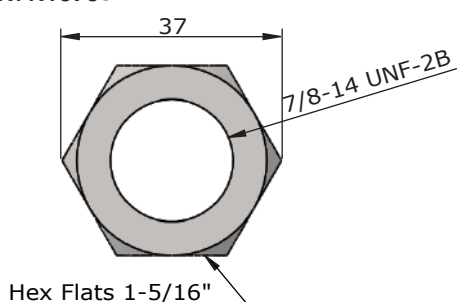
P/N: NT0304



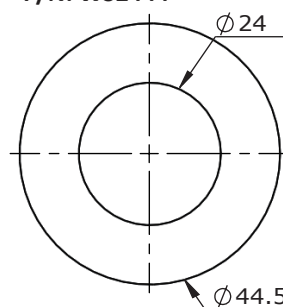
P/N: WS2140



P/N: NT0708



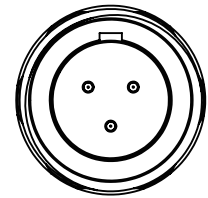
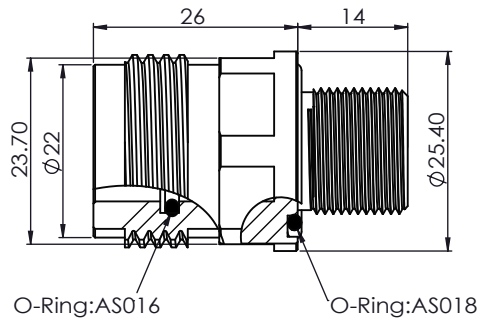
P/N: WS2444



Metal Shell G

Metal Shell G Bulkhead Connector (MSG-BCR)

Contact: 2, 3, 4, 5, 7, 8



*Dimensions in mm
Thread in inches

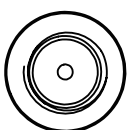
Operation Specification

Max. voltage	2, 3 contacts 600 VDC 4,5,6,7,8 contacts 300 VDC
Current rating @contact	2,3 contacts 3A~4A 4,5,6,7,8 contacts 2A~3A
Max. current @connector	20A
Insulation resistance	>200 Mohm
Contact resistance	<0.01 ohm
Wet mating	NA
Depth rating	600 bar
Temperature rating	-40 to 60°C

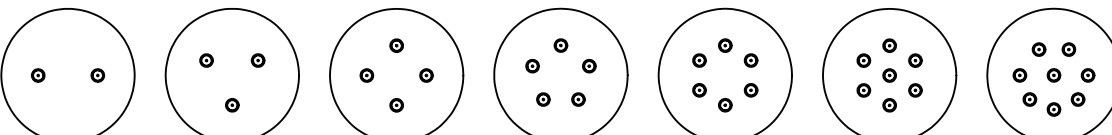
Material Specification

Connector body	Stainless steel 316
Bulkhead body	Stainless steel 316, titanium
Contact	Gold plated brass
Socket	Beryllium Copper
Location pin	NA
Inline cable	Upon request
O-rings	NBR

Face View



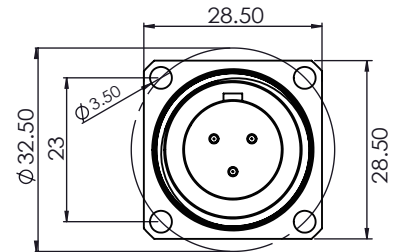
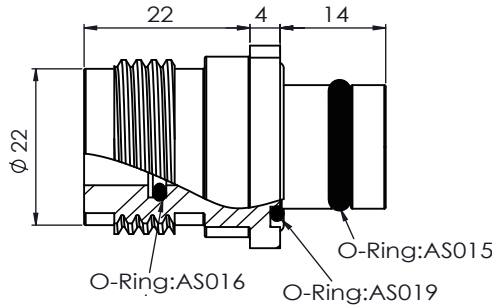
Optical Fiber / Coaxial (50 Ohm/75 Ohm) optional



Metal Shell G

Metal Shell G Flange Connector (MSG-FCR)

Contact: 1, 2, 3, 4, 5, 6, 7, 8



*Dimensions in mm
Thread in inches

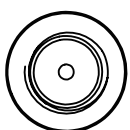
Operation Specification

Max. voltage	2, 3 contacts 600 VDC 4,5,6,7,8 contacts 300 VDC
Current rating @contact	2,3 contacts 3A~4A 4,5,6,7,8 contacts 2A~3A
Max. current @connector	20A
Insulation resistance	>200 Mohm
Contact resistance	<0.01 ohm
Wet mating	NA
Depth rating	600 bar
Temperature rating	-40 to 60°C

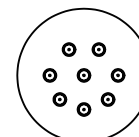
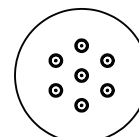
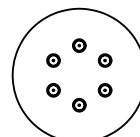
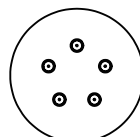
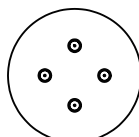
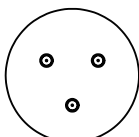
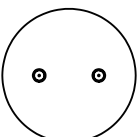
Material Specification

Connector body	Stainless steel 316
Bulkhead body	Stainless steel 316, titanium
Contact	Gold plated brass
Socket	Beryllium Copper
Location pin	NA
Inline cable	Upon request
O-rings	NBR

Face View



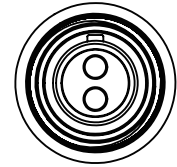
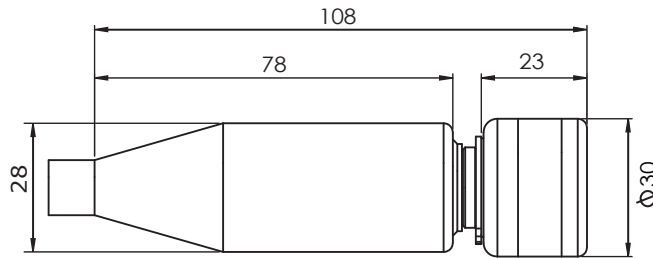
Optical Fiber / Coaxial (50 Ohm/75 Ohm) optional



Metal Shell G

Metal Shell G Coupling Connector (MSG-CCP)

Contact: 1, 2, 3, 4, 5, 6, 7, 8



*Dimensions in mm
Thread in inches

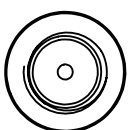
Operation Specification

Max. voltage	2, 3 contacts 600 VDC 4,5,6,7,8 contacts 300 VDC
Current rating @contact	2,3 contacts 3A~4A 4,5,6,7,8 contacts 2A~3A
Max. current @connector	20A
Insulation resistance	>200 Mohm
Contact resistance	<0.01 ohm
Wet mating	NA
Depth rating	600 bar
Temperature rating	-40 to 60°C

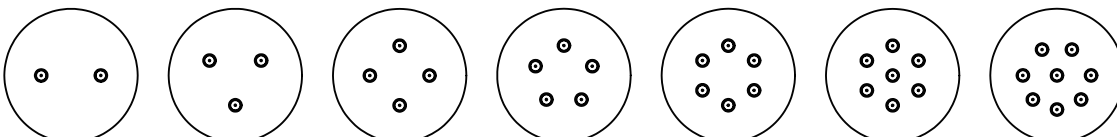
Material Specification

Connector body	Stainless steel 316
Bulkhead body	Stainless steel 316, titanium
Contact	Gold plated brass
Socket	Beryllium Copper
Location pin	NA
Inline cable	Upon request
O-rings	NBR

Face View



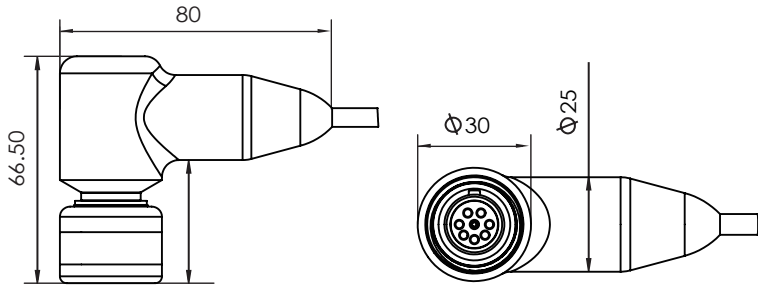
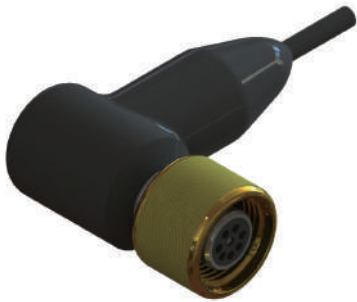
Optical Fiber / Coaxial (50 Ohm/75 Ohm) optional



Metal Shell G

Metal Shell G Coupling Right Angel (MSG-CCP-RA)

Contact: 1, 2, 3, 4, 5, 6, 7, 8



*Dimensions in mm
Thread in inches

Operation Specification

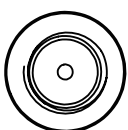
Max. voltage	2, 3 contacts 600 VDC 4,5,6,7,8 contacts 300 VDC
Current rating @contact	2,3 contacts 3A~4A 4,5,6,7,8 contacts 2A~3A
Max. current @connector	20A
Insulation resistance	>200 Mohm
Contact resistance	<0.01 ohm
Wet mating	NA
Depth rating	600 bar
Temperature rating	-40 to 60°C

Material Specification

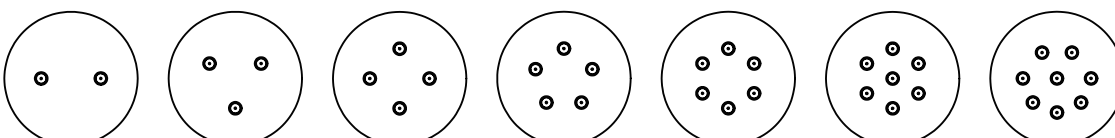
Connector body	Stainless steel 316
Bulkhead body	Stainless steel 316, titanium
Contact	Gold plated brass
Socket	Beryllium Copper
Location pin	NA
Bulkhead leads	Upon request
O-rings	NBR

* compatible with Subconn

Face View



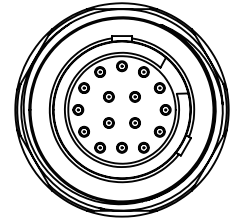
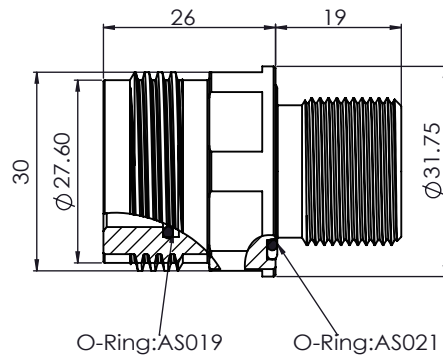
Optical Fiber / Coaxial (50 Ohm/75 Ohm) optional



Metal Shell L

Metal Shell L Bulkhead Connector (MSL-BCR)

Contact: 2, 3, 5, 7, 8, 10, 12, 16



*Dimensions in mm
Thread in inches

Operation Specification

Max. voltage	2, 3, 5, 7, 8 contacts 600 VDC 10, 12, 16 contacts 300 VDC
Current rating @contact	2, 3, 4, 5, 7, 8 contacts 3A~4A 10, 12, 16 contacts 2A~3A
Max. current @connector	10A
Insulation resistance	>200 Mohm
Contact resistance	<0.01 ohm
Wet mating	NA
Depth rating	600 bar
Temperature rating	-40 to 60°C

Material Specification

Connector body	Stainless steel 316
Bulkhead body	Stainless steel 316, titanium
Contact	Gold plated brass
Socket	Beryllium Copper
Location pin	NA
Inline cable	Upon request
O-rings	NBR

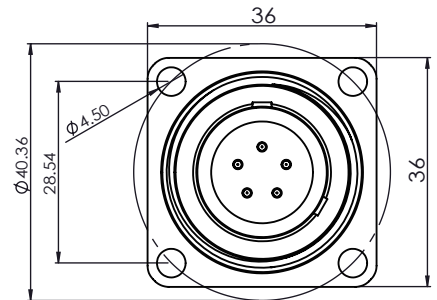
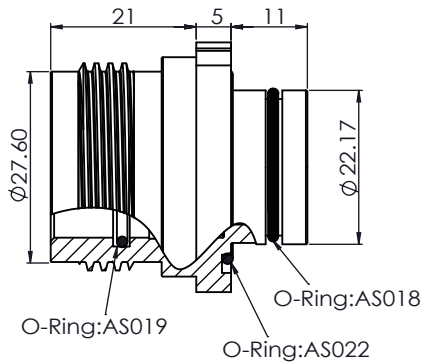
Face View



Metal Shell L

Metal Shell L Flange Connector (MSL-FCR)

Contact: 2, 3, 5, 7, 8, 10, 12, 16



*Dimensions in mm
Thread in inches

Operation Specification

Max. voltage	2, 3, 5, 7, 8 contacts 600 VDC 10, 12, 16 contacts 300 VDC
Current rating @contact	2, 3, 4, 5, 7, 8 contacts 3A~4A 10, 12, 16 contacts 2A~3A
Max. current @connector	10A
Insulation resistance	>200 Mohm
Contact resistance	<0.01 ohm
Wet mating	NA
Depth rating	600 bar
Temperature rating	-40 to 60°C

Material Specification

Connector body	Stainless steel 316
Bulkhead body	Stainless steel 316, titanium
Contact	Gold plated brass
Socket	Beryllium Copper
Location pin	NA
Inline cable	Upon request
O-rings	NBR

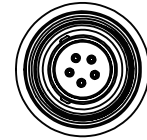
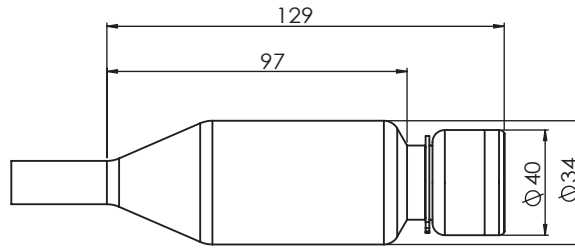
Face View



Metal Shell L

Metal Shell L Coupling Connector (MSL-CCP)

Contact: 2, 3, 5, 7, 8, 10, 12, 16



*Dimensions in mm
Thread in inches

Operation Specification

Max. voltage	2, 3, 5, 7, 8 contacts 600 VDC 10, 12, 16 contacts 300 VDC
Current rating @contact	2, 3, 4, 5, 7, 8 contacts 3A~4A 10, 12, 16 contacts 2A~3A
Max. current @connector	10A
Insulation resistance	>200 Mohm
Contact resistance	<0.01 ohm
Wet mating	NA
Depth rating	600 bar
Temperature rating	-40 to 60°C

Material Specification

Connector body	Stainless steel 316
Bulkhead body	Stainless steel 316, titanium
Contact	Gold plated brass
Socket	Beryllium Copper
Location pin	NA
Inline cable	Upon request
O-rings	NBR

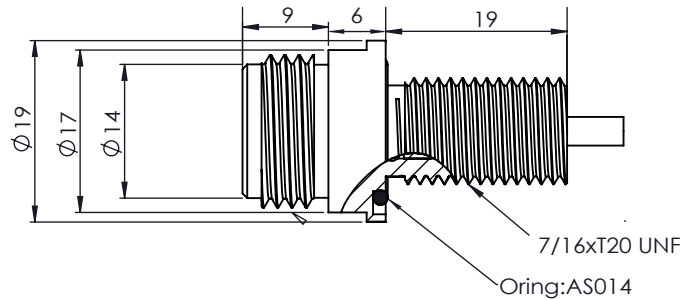
Face View



Metal Shell S

Metal Shell S Single Fiber Optic Connector (MSS-OP-BCR)

Contact: 1



*Dimensions in mm
Thread in inches

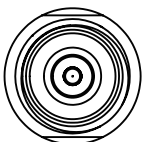
Operation Specification

Insertion loss	< 0.3 dB
Typically	< 0.5 dB
Wet mating	NA
Depth rating	600 bar
Temperature rating	-40 to 60°C

Material Specification

Connector body	Stainless steel 316
Bulkhead body	Stainless steel 316
Locking sleeve	Copper
O-rings	NBR

Face View

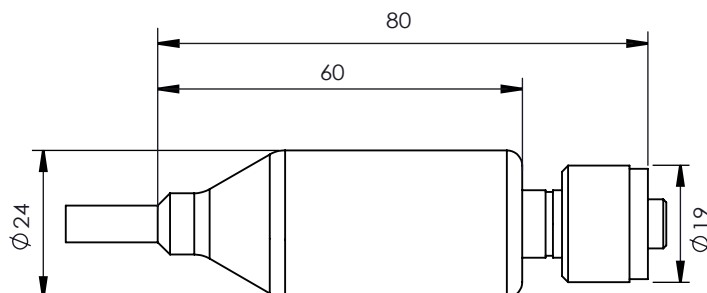


Metal Shell S

Metal Shell S Single Fiber Optic Connector (MSS-OP-CCP)



Contact: 1



*Dimensions in mm
Thread in inches

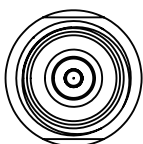
Operation Specification

Insertion loss	< 0.3 dB
Typically	< 0.5 dB
Wet mating	NA
Depth rating	600 bar
Temperature rating	-40 to 60°C

Material Specification

Connector body	Stainless steel 316
Bulkhead body	Stainless steel 316
Locking sleeve	Copper
O-rings	NBR

Face View



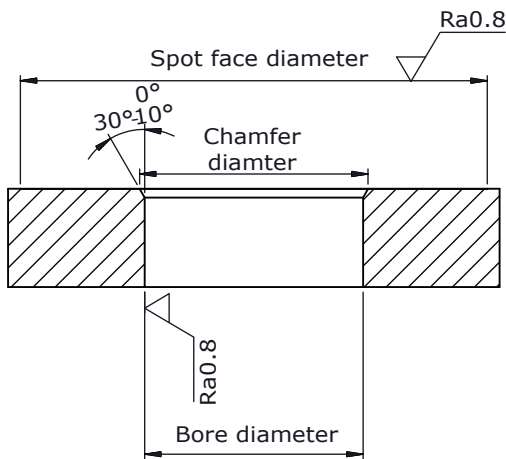
General Information



Conductor Dimension

Size of conductor, AWG	Diameter of solid conductor				Cross-sectional area of stranded conductor			
	Nominal, Mils (mm)		Minimum, Mils (mm)		Nominal, Cmils (mm ²)		Minimum, Cmils (mm ²)	
20	32.0	0.813	31.7	0.805	1020	0.519	1000	0.509
18	40.3	1.02	40.0	1.016	1620	0.823	1588	0.807

Mounting Requirement for Metal Shell



Mounting Requirements

Series	Bore \varnothing + 0.05/-0.00 (mm)	Chamfer \varnothing ± 0.25 (mm)	Spot Face \varnothing ± 0.4 (mm)
MSG	17.50	18.50	26.00
MSL	22.23	23.25	35.00
MSM	35.30	36.50	48.00

Handling instruction & Note

- Grease must be applied before every mating
- Make sure the socket of female connector is completely sealed with grease
- Make sure the proper torque (see table of "Recommend torque on the threads size") was applied **DO NOT** over tighten bulkhead nut
- **DO NOT** pull on cable to disconnect
- Dow Corning® 111 or MOLYKOTE® 44-M grease is recommended.
- Replace o-ring when re-using connectors
- Keep the bulkhead o-ring groove clean
- Avoid o-ring cuts and nicks
- Avoid sharp bends at cable when entering to the connector

General Information

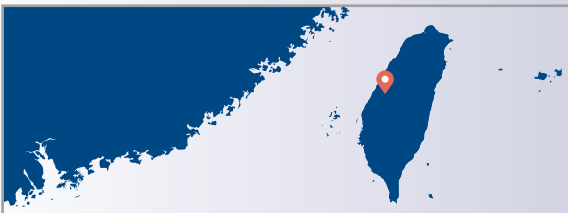


Recommend torque on the threads size

Type	Material	ft. lb.	Torque-Nm
UNF 3/8-24	Brass	2.9	4.0
	Stainless steel	4.4	6.0
	Titanium	4.4	6.0
UNF 7/16-20	Brass	7.4	10
	Stainless steel	10.3	14
	Titanium	10.3	14
UNF 1/2-20	Brass	11.0	15.0
	Stainless steel	15.5	21.0
	Titanium	15.5	21.0
UNF 5/8-18	Brass	21.4	29.0
	Stainless steel	30.2	41.0
	Titanium	30.2	41.0
UNF 3/4-16	Brass	32.4	44.0
	Stainless steel	46.5	63.0
	Titanium	46.5	63.0
UNF 7/8-14	Brass	44.3	60.0
	Stainless steel	59.0	80.0
	Titanium	59.0	80.0



Your New Choice!



DWTEK Co.,Ltd

✉ info@dwtek.com.tw

🌐 dwtekmarine.com