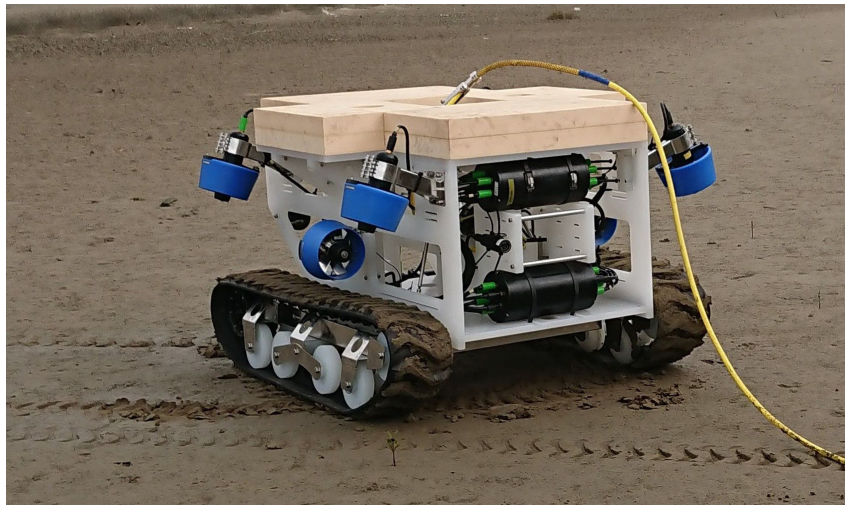


# Crawler

## Special Use Electrical ROV

Crawler, a versatile and powerful ROV, created to work both on land and in water to fly and drive on the seabed, can be used in many scenarios with different tooling for inspection, repair operations, and so on.



## Features

Vertically or obliquely crawl on onshore, nearshore, offshore, and seabed

Crawl or jump over obstacles like rocks, fishnets, marine litter, etc.

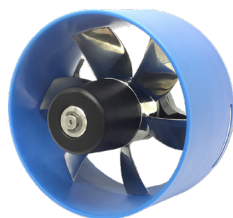
TSS can be equipped to track subsea cables and pipelines (optional)

Integrated 16ft or 200ft container package service (optional)

## Application

- UXO inspection
- Cable route inspection
- Intervention work

## Overview & Add- on product



### Thruster

Horizontal thruster:  
750w\*4 (standard)  
Vertical thruster:  
750w\*4 (standard)  
Overload protection  
Optional: 1200W thruster



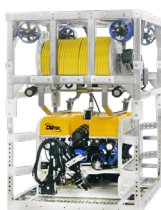
### 16ft or 20ft ROVs Container Service

DNV, GL Certified Control Containers for easy MOB & DEMOB. Equipped with the pilot chairs, integrated control panel, joy stickers, display screens, power supply, work stations, AC, and alarm system as well.



### Sensor

Add on products: PCG100  
or customized options



### Tether Management System (TMS)

2 Types of TMS: Top-Hat & Cage  
Variable tether speed and depth rating



### Camera

Mini SD camera:  
Max. 4 mini SD cameras  
are available



### LARS

Optional



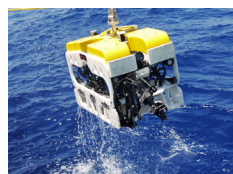
### LED

2 up to 6 intensity 6900 lumens  
LED lights  
Dimming function



### HD Camera/ SD Mini Camera

Optional



### Manipulator

Optional: 5 axis and 7 axis

### Other Add - on Products

Sensor / Hydronic tools / DNV / I  
NS / Latch / Sonar / TSS

\*\*All product descriptions and specifications are subject to be changed without notice

## Vehicle Specification

Specification	
Dimensions (L x W x H)	1300*1160*923mm
Weight in air	347kg
Depth rating	300m (Standard)

Vehicle Power and Performance	
Propulsion	Horizontal thruster: 850kw*2 Vertical thruster: 850kw*4
Thrust	Forward/reverse: 50 kgf
	Vertical: 88 kgf

Vehicle Cameras and Lighting	
Cameras	HD Camera * 1 (Standard)
	Up to 4 SD cameras (Optional)
Lighting	150W LED * 2 (Standard)

Vehicle Control and Navigation	
Automatic control	Option
Heading and altitude sensors	Heading: Standard Altitude: Optional
Depth sensor	Standard
Navigation Sensor	Standard
Obstacle Avoidance	Optional
DVL	Optional
INS	Optional
USBL	Optional
Cable Tracking System	Optional

Vehicle Optional Power/Data Interfaces	
Data links	Optical fiber
Power	Input (VAC): 220 V Single - Phase 50/60Hz
	Output (VDC): 300V

LARS	
Optional	

\*\*All product descriptions and specifications are subject to be changed without notice