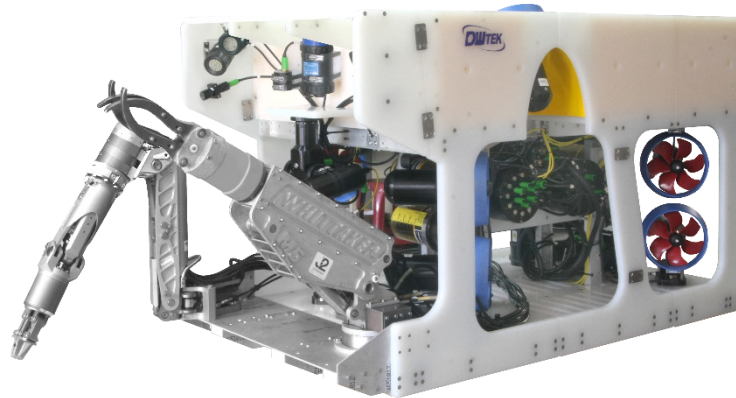


# Monew

## Working Class Electrical ROV

Monew is named after the Taiwan Sea Goddess, as a guard of the sea. A new generation of ROV, equipped with 8 horizontal thrusters, Monew has been tested under the strong Taiwan Strait current with proven performance to high resistance to ocean currents. It is designed with an independent motor unit with an all-electric system, which is easy to disassemble, maintain, and clean to operate in oil & gas light maintenance.



## Features

**Design for underwater multipurpose**

**Internal isolation between power supply and signal power supply**

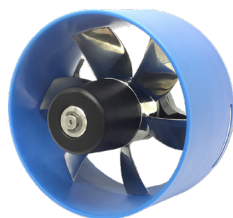
**Open frame structure: high degree of customization**

**High compatibility with a wide assortment of tooling**

## Application

- **Oil & Gas**
- **Offshore Wind**
- **Submerged Infrastructure & Construction**
- **IRP Inspection, repair, maintenance**

## Overview & Add- on product



### Thruster

Horizontal thruster:  
4 (standard) / Max. 8 (optional)  
Vertical thruster:  
3 (standard)  
Overload protection



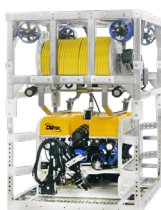
### 16ft or 20ft ROVs Container Service

DNV, GL Certified Control Containers for easy MOB & DEMOB. Equipped with the pilot chairs, integrated control panel, joy stickers, display screens, power supply, work stations, AC, and alarm system as well.



### Sensor

Add on products: PCG100  
or customized options



### Tether Management System (TMS)

2 Types of TMS: Top-Hat & Cage  
Variable tether speed and depth rating



### Camera

Max. 4 additional SD cameras  
are available  
Additional option: tilt



### LARS

Optional



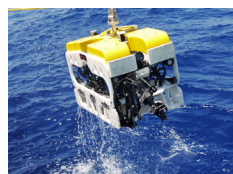
### LED

2 up to 6 intensity 6900 lumens  
LED lights  
Dimming function



### HD Camera/ SD Mini Camera

Optional



### Manipulator

Max. 2 manipulator  
Optional: 5 axis and 7 axis

### Other Add - on Products

Sensor / Hydronic tools / DNV / I  
NS / Latch / Sonar / TSS

\*\*All product descriptions and specifications are subject to be changed without notice

## Vehicle Specification

Specification	
Dimensions (L x W x H)	2100 x 1300 x 1200 mm
Weight in air	800 kg
Depth rating	1000 m (standard) 3000 m (optional)
Payload	60 kg

Vehicle Power and Performance	
Hydraulic power units	Optional
Propulsion	Horizontal thruster: 5 KW * 4 (5KW * 8 optional) Vertical thruster: 5 KW * 3
Thrust	Forward/reverse: 228 kgf
	Lateral: 182 kgf
	Vertical: 230 kgf

Vehicle Manipulators and Tooling	
Manipulators	5 axis or 7 axis*2 (optional)
Wrist camera assembly	SD Camera * 1 (Optional)

Hydraulic Tool Control	
HP supply	Optional
MP supply	Optional
LP supply	Optional
Reservoir capacity	Optional
Tooling space	Optional
Proportional tooling valves	Optional

Vehicle Manipulators and Tooling	
Manipulators	5 axis or 7 axis*2 (optional)
Wrist camera assembly	SD Camera * 1 (Optional)

Vehicle Control and Navigation	
Automatic control	Optional
Heading and altitude sensors	Heading: Standard Altitude: Optional
Depth sensor	Standard
Navigation Sensor	Standard
Obstacle Avoidance Sonar	Optional
DVL	Optional
INS	Optional
USBL	Optional
Cable Tracking System	Optional

Vehicle Optional Power/Data Interfaces	
Data links	Optical fiber
Power	Input (VAC): 380 - 440 V Three - Phase 50/60 Hz Output (VDC): 600V (Thruster) / 400V (Electronic)

Tether management system	
Type	Top-Hat
Electro-optical tether	200 M
Cameras	SD camera x2 (Standard) Up to 4 SD camera
Lighting	23 W x2 (Standard) Up to 4 23W LED
Options	USBL/Depth

LARS	
Optional	

\*\*All product descriptions and specifications are subject to be changed without notice