

Investigator 30

Observation Class ROV

The fundamental design concept behind the I-30 ROV is the creation of an expandable vehicle that is both functional and versatile. The extraordinary expandable capability allows the operator to follow their expectation to customize a full function ROV for the specific application. The highly excellent flexible vehicle design allows the installation of a wide range of different payloads and equipment. It opens a new page for this class of remote observation vehicles.



Features

Portable System & Versatile Platform

Easy to Mob & Demob, Lunch & Recover

Cost Effective & Reliable

Application

- **Aquatic Farming**
- **Exploration & Research**
- **Offshore structural inspections**

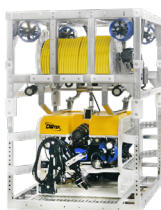
Overview & Add- on product

Sensor



Add on products: PCG100
or customized options

Others: hydronic tools,
DNV, INS, latch, sonar



Tether Management System (TMS)

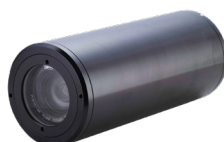
2 Types of TMS: Top-Hat & Cage
Variable tether speed and depth rating

Camera



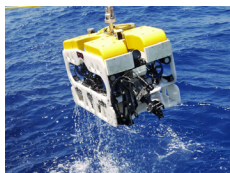
HD Camera
SD Mini Camera

HD Camera/ SD Mini Camera



Optional

Manipulator



Optional

**All product descriptions and specifications are subject to be changed without notice

Vehicle Specification

| Specification | |
|------------------------|--------------------|
| Dimensions (L x W x H) | 791 x 670 x 350 mm |
| Weight in air | 30 kg |
| Depth rating | 300 m |
| Payload | 5 kg |

| Vehicle Power and Performance | |
|-------------------------------|--------------------------|
| Propulsion | Horizontal thruster: 500 |
| Thrust | Forward Thrust: 20kgf |
| | Lateral Thrust: 10 kgf |
| | Vertical Thrust: 10 kgf |

| Vehicle Manipulators and Tooling | |
|----------------------------------|----------|
| Manipulators | Optional |

| Electrical Feature | |
|--------------------|---------------------------------------|
| Power Unit | 220 VAC Single Phase 50~60 Hz @16A |
| Power Output | 300 VDC |

| ROV Configuration | |
|-------------------|----------------|
| Tilt Module | Standard |
| Navigation System | x 1 (Standard) |
| IP Camera | x1 (Standard) |

| Surface Control Unit | |
|----------------------|-------------|
| Monitor Screen | 15" Drawing |
| Power Unit | 3KW |

| Vehicle Cameras and Lighting | |
|------------------------------|--|
| Cameras | Mini SD Camera x2 (Optional) |
| | IP Camera (1080-Full HD/30FPS) (Optional) |
| Lighting | 23W LED x2 (Standard) |

| Vehicle Control and Navigation | |
|---------------------------------|----------|
| Heading and altitude sensors | Optional |
| Depth sensor | Optional |
| Navigation sensor | Optional |
| Obstacle avoidance sonar | Optional |

| Tether Management System (TMS) | |
|--------------------------------|---------------------------------|
| Tether | 150 m (max. 300m for option) |

| Options | |
|------------------------------------|--|
| Flash Beacon (Multiple) | |
| Altimeter (Auto altimeter Fuction) | |
| CP Probe | |
| UT Thickness Probe | |

**All product descriptions and specifications are subject to be changed without notice